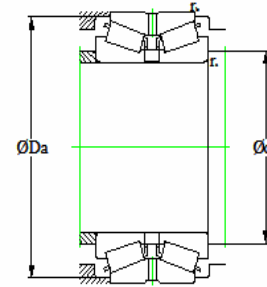
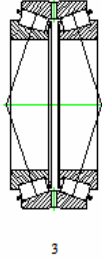
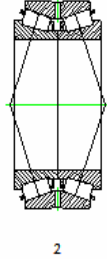
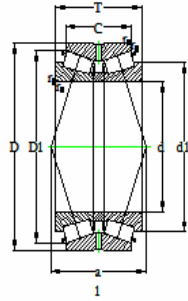


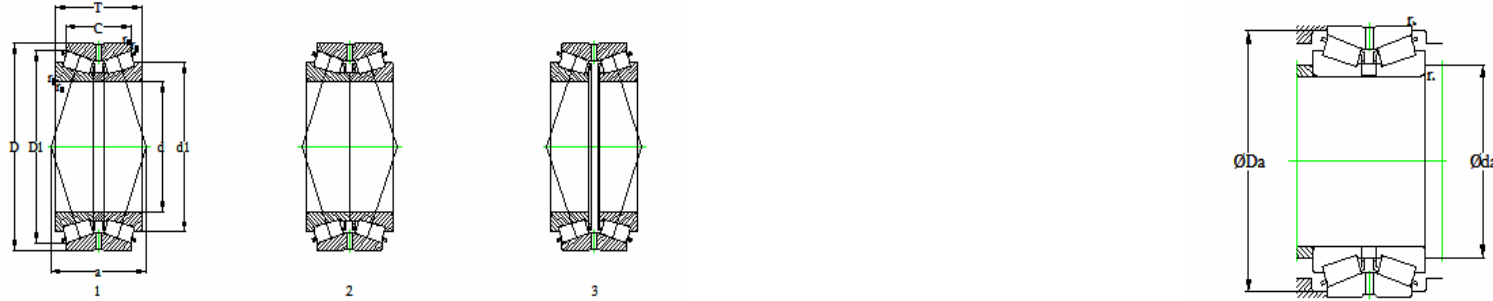
双内圈双列圆锥滚子轴承(英制系列) (Inch Double-Row Tapered Roller Bearings)



基本尺寸(mm) Boundary Dimensions						基本额定载荷(kN) Basic Load Ratings		轴承代号 Bearing Numbers	结构 Design	相关安装尺寸 Abutment and Fillet Dimensions				计算系数 Calculation Factors				质量(kg) Mass (参考) Refer.
d	D	T	C	r _{1.2min}	r _{3.4min}	Cr	Cor			d _{a min}	D _{a max}	r _{b max}	r _{a max}	e	Y ₁	Y ₂	Y ₀	
100	180.975	104.775	85.725	1.6	3.6	440	750	783/774D	1	123	171	1.6	3.6	0.39	1.8	2.6	1.7	10.6
101.6	161.925	82.548	61.912	0.8	3.6	310	570	52400/52637D	1	120	155	0.8	3.6	0.47	1.4	2.1	1.4	5.7
	168.275	92.075	69.85	0.8	3.6	380	685	687/672D	1	121	161	0.8	3.6	0.47	1.4	2.1	1.4	7.3
	180	104.775	85.725	0.8	3.6	440	750	780/773D	1	124	171	0.8	3.6	0.39	1.8	2.6	1.7	10.2
	180.975	104.775	85.725	1.6	3.6	440	750	780/774D	1	124	171	1.6	3.6	0.39	1.8	2.6	1.7	10.4
	190.5	127	101.6	1.6	8	605	1000	861/854D	1	130	180	1.6	8	0.33	2	3	2	14.4
	190.5	127	104.775	1.6	8	665	1040	HH221449/HH221410D	1	131	183	1.6	8	0.33	2	3	2	14.3
	200.025	115.888	80.216	2.3	3.6	540	850	98400/98789D	1	132	190	2.3	3.6	0.63	1.1	1.6	1	14.8
	212.725	142.875	117.475	1.6	7	975	1620	HH224335/HH224310D	1	137	205	1.6	7	0.33	2.1	3.1	2	23.3
104.775	180	104.775	85.725	0.8	3.6	440	750	782/773D	1	125	171	0.8	3.6	0.39	1.8	2.6	1.7	9.7
	180.975	104.775	85.725	1.6	6.4	440	750	786/774D	1	128	171	1.6	6.4	0.39	1.8	2.6	1.7	9.9
	190.5	106.632	80.962	1.6	3.6	510	925	71412/71751D	1	131	182	1.6	3.6	0.42	1.6	2.4	1.6	12.2
106.362	165.1	82.55	63.5	0.8	3.6	335	645	56418/56650D	1	126	160	0.8	3.6	0.5	1.4	2	1.3	5.9
107.95	146.05	49.212	39.688	0.8	1.5	147	330	L521949/L521910D	1	120	141	0.8	1.5	0.39	1.7	2.6	1.7	2.2
	165.1	82.55	63.5	0.8	3.6	335	645	56425/56650D	1	127	160	0.8	3.6	0.5	1.4	2	1.3	5.7
	190.5	106.362	80.962	1.6	3.6	510	925	71425/71751D	1	133	182	1.6	3.6	0.42	1.6	2.4	1.6	11.8
	212.725	142.875	117.475	1.6	8	975	1620	HH224340/HH224310D	1	142	205	1.6	8	0.33	2.1	3.1	2	22.1
	234.95	111.125	82.55	1.6	6.4	610	840	EE342043/342091D	1	144	222	1.6	6.4	0.43	1.6	2.3	1.5	20
109.952	190.5	106.362	80.962	1.6	3.6	510	925	71432/71751D	1	134	182	1.6	3.6	0.42	1.6	2.4	1.6	11.5
	177.8	92.075	69.85	0.8	3.6	400	750	64433/64700D	1	132	173	0.8	3.6	0.52	1.3	1.9	1.3	8
111.125	190.5	106.362	80.962	1.6	3.6	510	925	71437/71751D	1	135	182	1.6	3.6	0.42	1.6	2.4	1.6	11.3
114.3	177.8	92.075	69.85	0.8	3.6	444	788	64450/64700D	1	135	173	0.8	3.6	0.52	1.3	1.9	1.3	7.75
	212.725	142.875	117.475	1.6	7	975	1620	HH224346/HH224310D	1	144	205	1.6	7	0.33	2.1	3.1	2	20.9
	212.725	142.875	117.475	1.6	3.6	975	1620	HH224346NA/HH224310D	2	140	205	1.6	3.6	0.33	2.1	3.1	2	21
	228.6	115.888	84.138	2.3	3.6	645	1060	HM926740/HM926710D	1	152	220	2.3	3.6	0.74	0.92	1.4	0.9	20.5

双内圈双列圆锥滚子轴承(英制系列) (Inch Double-Row Tapered Roller Bearings)

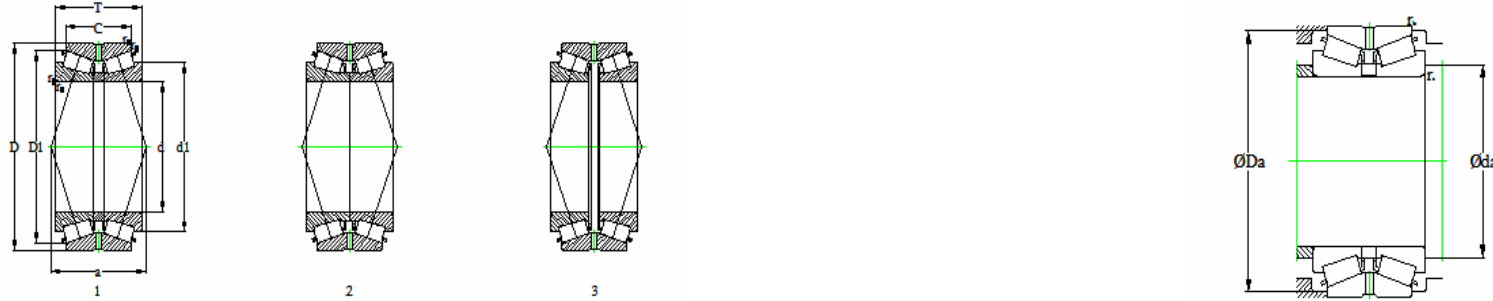
WRT



基本尺寸(mm) Boundary Dimensions						基本额定载荷(kN) Basic Load Ratings		轴承代号 Bearing Numbers	结构 Design	相关安装尺寸 Abutment and Fillet Dimensions				计算系数 Calculation Factors				质量(kg) Mass (参考) Refer.
d	D	T	C	r _{1.2min}	r _{3.4min}	Cr	Cor			d _{a min}	D _{a max}	r _{b max}	r _{a max}	e	Y ₁	Y ₂	Y ₀	
114.976	212.725	142.875	117.475	1.6	7	975	1620	HH224349/HH224310D	1	144	205	1.6	7	0.33	2.1	3.1	2	20.8
120	174.625	77.788	61.913	0.8	3.6	365	765	M224748/M224710D	1	137	169	0.8	3.6	0.33	2	3	2	5.8
120.65	174.625	77.788	61.913	0.8	3.6	365	765	M224749/M224710D	1	138	169	0.8	3.6	0.33	2	3	2	5.7
	206.375	107.95	82.55	0.8	3.2	545	1060	795/792D	1	149	199	0.8	3.2	0.46	1.5	2.2	1.4	14
123.825	182.562	85.725	73.025	0.8	3.6	390	885	48286/48220D	1	143	177	0.8	3.6	0.31	2.2	3.3	2.2	7.4
124.943	234.95	142.875	114.3	1.6	6.4	875	1580	95491/95927D	1	162	226	1.6	6.4	0.37	1.8	2.7	1.8	25.7
127	169.975	58.738	49.213	1	1.6	225	501	L225849/L225812D	1	135.2	161.8	1	1.6	0.33	2.03	3.02	1.98	3.45
	182.563	85.725	73.025	0.8	3.6	389	858	48291/48220D	1	139.2	173.2	0.8	3.6	0.31	2.21	3.29	2.16	6.99
	196.85	101.6	85.725	0.8	3.6	535	1120	67388/67322D	1	150	192	0.8	3.6	0.34	2	2.9	1.9	11.1
196.85	107.95	92.075	82.55	0.8	3.6	534	1120	67388/67323D	1	139.2	188.8	0.8	3.6	0.34	1.96	2.92	1.92	11.4
	200.025	101.6	85.725	0.8	3.6	535	1120	67388/67325D	1	150	193	0.8	3.6	0.34	2	2.9	1.9	11.7
	206.375	107.95	82.55	0.8	3.6	558	1100	798/792D	1	139.2	194.1	0.8	3.6	0.46	1.47	2.19	1.44	13.2
215.9	106.362	80.962	84.138	1.6	3.6	495	985	74500/74851D	1	157	208	1.6	3.6	0.49	1.4	2.1	1.4	15
	228.6	115.888	84.138	2.3	3.6	645	1060	HM926747/HM926710D	1	158	220	2.3	3.6	0.74	0.92	1.4	0.9	18.3
	230	126	84	1.6	4	645	1060	127KDE2301	1	158	220	1.6	4	0.74	0.92	1.4	0.9	19.6
234.95	142.875	114.3	136.525	1.6	6.4	875	1580	95500/95927D	1	163	226	1.6	6.4	0.37	1.8	2.7	1.8	25.2
	258.762	177.8	136.525	1.6	9.6	975	1600	EE153050/153103D	1	167	243	1.6	9.6	0.32	2.1	3.1	2.1	38
127.792	228.6	115.888	84.138	2.3	3.6	645	1060	HM926749/HM926710D	1	158	220	2.3	3.6	0.74	0.92	1.4	0.9	18.1
128.588	206.375	107.95	82.55	0.8	3.2	545	1060	799/792D	1	153	199	0.8	3.2	0.46	1.5	2.2	1.4	12.7
130.175	196.85	101.6	85.725	0.8	3.2	535	1120	67389/67322D	1	152	192	0.8	3.2	0.34	2	2.9	1.9	10.6
	200.025	101.6	85.725	0.8	3.2	535	1120	67389/67325D	1	152	192	0.8	3.2	0.34	2	2.9	1.9	11.2
130.175	206.375	107.95	82.55	0.8	3.2	545	1060	799A/792D	1	154	199	0.8	3.2	0.46	1.5	2.2	1.4	12.4
133.35	177.008	57.15	47.625	0.8	1.5	213	515	L327249/L327210D	1	147	172	0.8	1.5	0.35	1.9	2.9	1.9	3.7

双内圈双列圆锥滚子轴承(英制系列) (Inch Double-Row Tapered Roller Bearings)

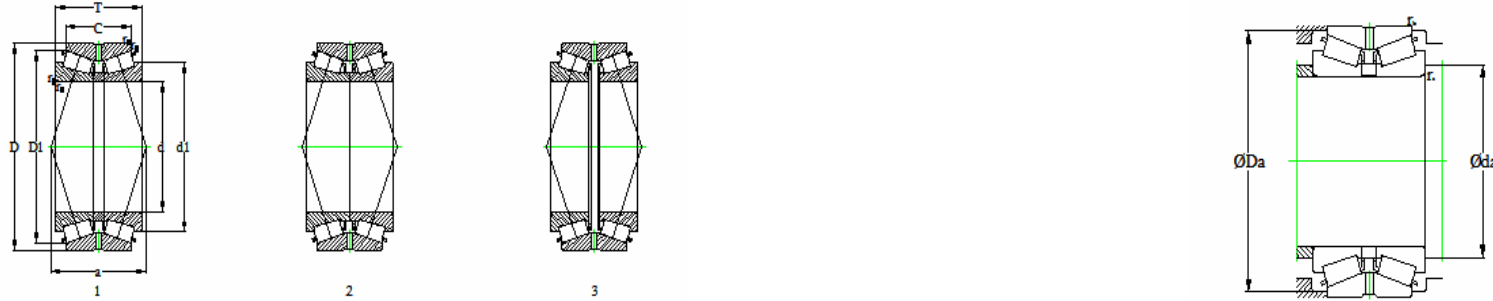
WRT



基本尺寸(mm) Boundary Dimensions						基本额定载荷(kN) Basic Load Ratings		轴承代号 Bearing Numbers	结构 Design	相关安装尺寸 Abutment and Fillet Dimensions				计算系数 Calculation Factors				质量(kg) Mass (参考) Refer.
d	D	T	C	r _{1.2min}	r _{3.4min}	Cr	Cor			d _{a min}	D _{a max}	r _{b max}	r _{a max}	e	Y ₁	Y ₂	Y ₀	
133.35	177.008	60.325	47.625	0.8	1.5	241	557	L327248NA/L327210D	1	141.6	169	0.8	1.5	0.35	1.94	2.89	1.9	3.79
	190.5	85.725	73.025	0.8	3.6	370	880	48385/48320D	1	153	185	0.8	3.6	0.32	2.1	3.1	2.1	7.7
	196.85	101.6	85.725	0.8	3.6	535	1120	67390/67322D	1	153	192	0.8	3.6	0.34	2	2.9	1.9	10
	200.025	101.6	85.725	0.8	3.6	535	1120	67390/67325D	1	153	193	0.8	3.6	0.34	2	2.9	1.9	10.6
	215.9	106.362	80.962	1.6	3.6	495	985	74525/74851D	1	160	208	1.6	3.6	0.49	1.4	2.1	1.4	14
234.95	142.875	114.3	1.6	9.6	875	1580	95525/95927D	1	169	226	1.6	9.6	0.37	1.8	2.7	1.8	23.8	
136.525	190.5	85.725	73.025	0.8	3.6	370	880	48393/48320D	1	155	185	0.8	3.6	0.32	2.1	3.1	2.1	7.3
	215.9	106.362	80.962	1.6	3.6	495	985	74537/74851D	1	162	208	1.6	3.6	0.49	1.4	2.1	1.4	13.4
	228.6	123.825	98.425	1.6	3.6	650	1240	896/892D	1	163	219	1.6	3.6	0.42	1.6	2.4	1.6	18.7
139.7	254	149.225	111.125	1.6	7.1	941	1830	99537/99102D	1	155.7	236.4	1.6	7.1	0.41	1.66	2.47	1.62	31.9
	254	152.4	114.3	1.6	7.1	885	1660	99537/99101D	1	178	245	1.6	7.1	0.41	1.7	2.5	1.6	31.2
139.7	215.9	106.362	80.962	1.6	3.6	495	985	74550/74851D	1	163	208	1.6	3.6	0.49	1.4	2.1	1.4	12.8
	222.25	75.692	53.975	2.3	3.6	325	535	73551/73876D	1	162	211	2.3	3.6	0.44	1.5	2.3	1.5	9.3
	228.6	123.825	98.425	1.6	3.6	753	1460	898/892D	1	151.9	214.2	1.6	3.6	0.42	1.6	2.39	1.57	18.5
	236.538	131.762	106.362	1.6	3.6	775	1440	HM231132/HM231111D	1	168	227	1.6	3.6	0.32	2.1	3.2	2.1	21
	241.3	131.762	106.362	1.6	3.6	775	1440	HM231132/HM231116D	1	168	230	1.6	3.6	0.32	2.1	3.2	2.1	22.6
	244.475	107.95	79.375	1.6	3.6	552	989	81550/81963D	1	151.9	226.5	1.6	3.6	0.35	1.93	2.88	1.89	18.8
	254	149.225	111.125	1.6	7	1026	1862	99550/99102D	1	179	245	1.6	7	0.4	1.7	2.5	1.6	31
	254	152.4	114.3	1.6	7	885	1660	99550/99101D	1	179	245	1.6	7	0.41	1.7	2.5	1.6	30.4
	268.288	160.338	125.413	1.6	6.4	1130	2090	EE107055/107105D	1	157.5	249	1.6	6.4	0.39	1.74	2.59	1.7	39.9
	304.8	135.733	97.633	1.6	3.2	1030	1600	EE750558/751204D	1	151.1	267.5	1.6	3.2	0.33	2.03	3.02	1.98	44.7
307.975	200.025	155.575	1.6	3.2	1740	2780	HH234031/HH234011D	1	180	285	1.6	3.2	0.33	2.07	3.08	2.02	65.9	
307.975	200.025	146.05	2.4	9.5	1360	2300	EE450551/451215D	1	163.7	274.9	2.4	9.5	0.33	2.07	3.09	2.03	66.2	
142.875	200.025	87.315	73.025	0.8	8	390	915	48684/48620D	1	167	195	0.8	8	0.34	2	3	2	7.9
	200.025	93.665	73.025	0.8	3.6	422	982	48686/48620D	1	155.1	190.1	0.8	3.6	0.34	2.01	2.99	1.96	8.43
	236.538	131.763	106.363	1.6	3.6	856	1660	HM231136/HM231111D	1	155.1	222.7	1.6	3.6	0.32	2.12	3.15	2.07	21.8
	241.3	131.762	106.362	1.6	3.6	685	1360	HM231136/HM231116D	1	171	230	1.6	3.6	0.44	1.5	2.3	1.5	22.4

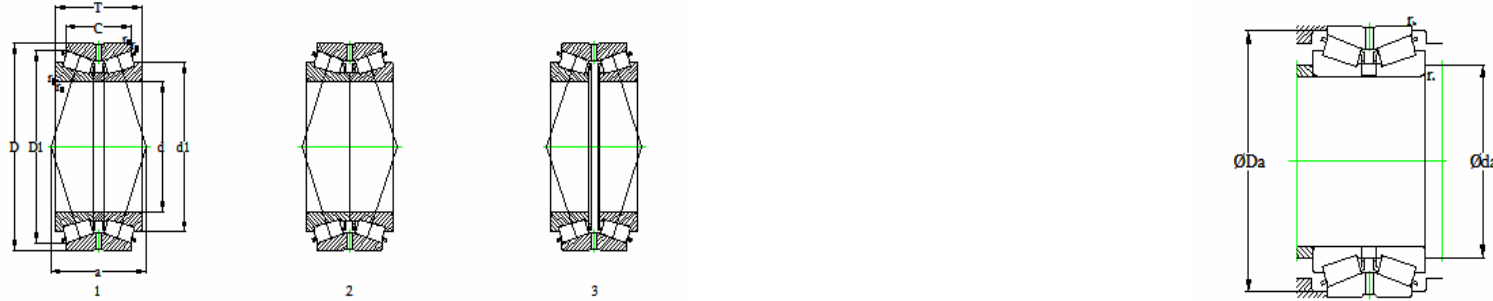
双内圈双列圆锥滚子轴承(英制系列) (Inch Double-Row Tapered Roller Bearings)

WRT



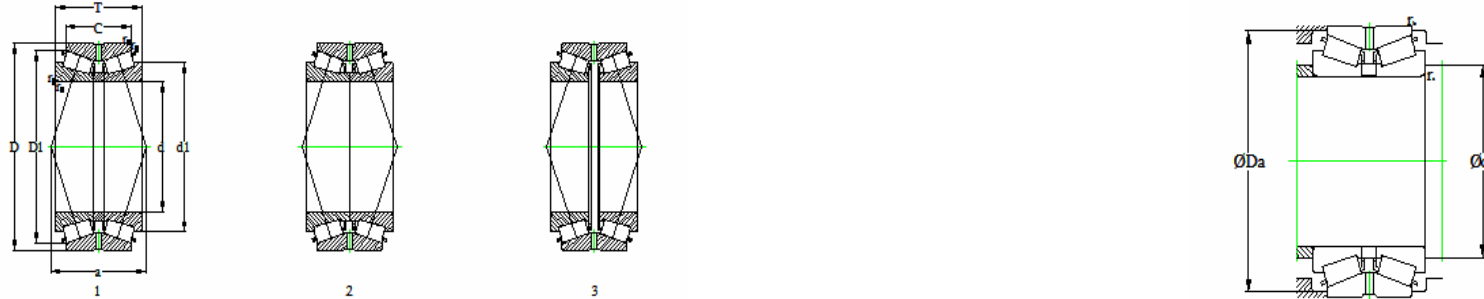
基本尺寸(mm) Boundary Dimensions						基本额定载荷(kN) Basic Load Ratings		轴承代号 Bearing Numbers	结构 Design	相关安装尺寸 Abutment and Fillet Dimensions				计算系数 Calculation Factors				质量(kg) Mass (参考) Refer.
d	D	T	C	r _{1.2min}	r _{3.4min}	Cr	Cor			d _{a min}	D _{a max}	r _{b max}	r _{a max}	e	Y ₁	Y ₂	Y ₀	
146.05	193.675	65.085	53.975	0.8	1.5	303	660	36690/36620D	1	161	188	0.8	1.5	0.37	1.8	2.7	1.8	5
	236.538	131.762	106.362	1.6	3.6	775	1440	HM231140/HM231111D	1	171	227	1.6	3.6	0.32	2.1	3.2	2.1	19.6
	236.538	131.762	106.362	1.6	3.6	685	1360	82576/82932D	1	173	228	1.6	3.6	0.44	1.5	2.3	1.5	20.4
	236.538	131.762	106.362	1.6	3.6	775	1440	HM231140NA/HM231111D	2	171	227	1.6	3.6	0.32	2.1	3.2	2.1	19.7
	241.3	131.762	106.362	1.6	3.6	775	1440	HM231140/HM231116D	1	171	230	1.6	3.6	0.32	2.1	3.2	2.1	21.2
	241.3	131.762	106.362	1.6	3.6	775	1440	HM231140NA/HM231116D	2	171	230	1.6	3.6	0.32	2.1	3.2	2.1	21.3
146.05	241.3	131.762	106.362	1.6	3.6	719	1460	82576/82951D	1	158.3	224.3	1.6	3.6	0.44	1.53	2.27	1.49	22.6
	244.475	107.95	79.375	1.6	3.6	570	1020	81575/81963D	1	175	235	1.6	3.6	0.35	1.9	2.9	1.9	17.9
	254	149.225	111.125	1.6	7	885	1660	99575/99102D	1	182	245	1.6	7	0.41	1.7	2.5	1.6	28
	254	152.4	114.3	1.6	7	941	1830	99575/99101D	1	165.3	236.4	1.6	7	0.41	1.66	2.47	1.62	30
	268.288	160.338	125.412	1.6	7	1040	1960	EE107057/107105D	1	184	256	1.6	7	0.39	1.7	2.6	1.7	36.5
	304.8	135.733	97.633	1.6	3.2	1090	1560	EE750576/751204D	1	180	285	1.6	3.2	0.33	2	3	2	42.1
	307.975	200.025	155.575	2.3	9.7	1510	2380	HH234040/HH234011D	1	194	294	2.3	9.7	0.33	2.1	3.1	2	61.6
	307.975	200.025	146.05	2.3	9.7	1360	2300	EE450577/451215D	1	170.1	274.9	2.3	9.7	0.33	2.07	3.09	2.03	63.9
149.225	236.538	131.762	106.362	1.6	6.4	775	1440	HM231148/HM231111D	1	176	227	1.6	6.4	0.32	2.1	3.2	2.1	18.8
	236.538	131.762	106.362	1.6	3.6	775	1440	HM231149/HM231111D	1	173	227	1.6	3.6	0.32	2.1	3.2	2.1	18.8
	236.538	131.762	106.362	1.6	3.6	685	1360	82587/82932D	1	175	228	1.6	3.6	0.44	1.5	2.3	1.5	19.7
	236.538	131.762	106.362	1.6	3.6	775	1440	HM231149NA/HM231111D	2	173	227	1.6	3.6	0.32	2.1	3.2	2.1	18.9
	236.538	131.762	106.362	1.6	6.4	856	1660	HM231148/HM231111D	1	167	222.7	1.6	6.4	0.32	2.12	3.15	2.07	20.2
	236.538	131.762	106.362	1.6	3.6	856	1660	HM231149/HM231111D	1	161.4	222.7	1.6	3.6	0.32	2.12	3.15	2.07	20.3
	236.538	131.762	106.362	1.6	3.6	719	1460	82587/82932D	1	161.4	224.3	1.6	3.6	0.44	1.53	2.27	1.49	20.4
	241.3	131.762	106.362	1.6	3.6	775	1440	HM231149/HM231116D	1	173	230	1.6	3.6	0.32	2.1	3.2	2.1	20.4
	241.3	131.762	106.362	1.6	3.6	685	1360	82587/82951D	1	175	230	1.6	3.6	0.44	1.5	2.3	1.5	21
	241.3	131.762	106.362	1.6	3.6	775	1440	HM231149NA/HM231116D	2	173	230	1.6	3.6	0.32	2.1	3.2	2.1	20.5
	241.3	131.762	106.362	1.6	6.4	856	1660	HM231148/HM231116D	1	167	222.7	1.6	6.4	0.32	2.12	3.15	2.07	21.7
	241.3	131.762	106.362	1.6	3.6	856	1660	HM231149/HM231116D	1	161.4	222.7	1.6	3.6	0.32	2.12	3.15	2.07	21.8
254	149.225	111.125	1.6	6.4	885	1660	99587/99102D	1	184	245	1.6	6.4	0.41	1.7	2.5	1.6	27.4	

双内圈双列圆锥滚子轴承(英制系列) (Inch Double-Row Tapered Roller Bearings)



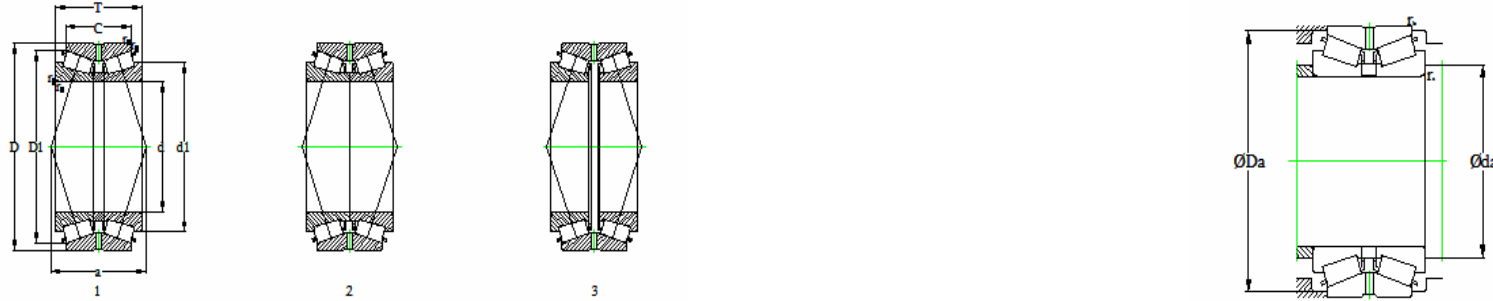
基本尺寸(mm) Boundary Dimensions						基本额定载荷(kN) Basic Load Ratings		轴承代号 Bearing Numbers	结构 Design	相关安装尺寸 Abutment and Fillet Dimensions				计算系数 Calculation Factors				质量(kg) Mass (参考) Refer.
d	D	T	C	r _{1.2min}	r _{3.4min}	Cr	Cor			d _{a min}	D _{a max}	r _{b max}	r _{a max}	e	Y ₁	Y ₂	Y ₀	
149.225	254	152.4	114.3	1.6	6.4	941	1830	99587/99101D	1	168.4	236.4	1.6	6.4	0.41	1.66	2.47	1.62	29.1
150	244.475	107.95	79.375	1.6	3.6	552	989	81590/81963D	1	162.2	226.5	1.6	3.6	0.35	1.93	2.88	1.89	16.8
150.812	244.475	107.95	79.375	1.6	3.6	570	1020	81593/81963D	1	177	235	1.6	3.6	0.35	1.9	2.9	1.9	16.9
152.4	222.25	100.01	76.2	0.8	8	490	1060	M231648/M231610D	1	179	215	0.8	8	0.33	2	3	2	11.9
	222.25	100.01	76.2	0.8	3.6	575	1187	M231649/M231610D	1	175	215	0.8	3.6	0.33	2	3	2	12
	222.25	100.01	76.2	0.8	8	541	1190	M231648/M231610D	1	173.2	209.3	0.8	8	0.33	2.03	3.02	1.98	11.8
	222.25	100.01	76.2	0.8	3.6	541	1190	M231649/M231610D	1	164.6	209.3	0.8	3.6	0.33	2.03	3.02	1.98	11.9
	222.25	106.36	82.55	0.8	3.6	490	1060	M231649/M231611D	1	175	215	0.8	3.6	0.33	2	3	2	12.5
	244.475	107.95	79.375	1.6	3.6	570	1020	81600/81693D	1	178	235	1.6	3.6	0.35	1.9	2.9	1.9	16.6
	254	149.225	111.125	1.6	7	885	1660	99600/99102D	1	185	245	1.6	7	0.41	1.7	2.5	1.6	26.5
	254	152.4	114.3	1.6	7	885	1660	99600/99101D	1	185	245	1.6	7	0.41	1.7	2.5	1.6	27.1
	268.288	160.338	125.412	1.6	7	1040	1960	EE107060/107105D	1	187	256	1.6	7	0.39	1.7	2.6	1.7	34.6
	307.975	200.025	146.05	2.3	9.7	1280	2150	EE450601/451215D	1	199	289	2.3	9.7	0.33	2.1	3.1	2	60.1
	307.975	200.025	155.575	2.3	9.7	1510	2380	HH234048/HH234011D	1	197	294	2.3	9.7	0.33	2.1	3.1	2	59.3
153.988	244.475	107.95	79.375	1.6	3.6	552	989	81606/81963D	1	166.2	226.5	1.6	3.6	0.35	1.93	2.88	1.89	16
158.75	225.425	85.725	69.85	0.8	3.6	410	1080	46780/46720D	1	183	219	0.8	3.6	0.38	1.8	2.6	1.7	11.1
	288.925	142.875	111.125	1.6	7	1050	1870	158KBE2851	1	201	278	1.6	7	0.32	2.1	3.2	2.1	37.3
	304.8	147.838	98.425	1.6	7	939	1600	EE280626/281201D	1	176.6	281.2	1.6	7	0.36	1.87	2.79	1.83	43
159.951	244.475	107.95	79.375	1.6	3.6	570	1020	81629/81963D	1	182	235	1.6	3.6	0.35	1.9	2.9	1.9	15.1
160.325	288.925	142.875	111.125	1.6	7	1050	1870	HM237532/HM237510D	1	202	278	1.6	7	0.32	2.1	3.2	2.1	36.8
	288.925	146.05	114.3	1.6	7	1080	190	HM237532/HM237511XD	1	179.5	270.2	1.6	7	0.32	2.12	3.15	2.07	37.9
161.925	374.65	184.15	130.175	1.6	7	1460	2180	EE117063/117148D	1	217	355	1.6	7	0.71	0.96	1.4	0.93	89.3
165.1	215.9	58.74	47.625	0.8	1.5	263	590	L433749/L433710D	1	180	210	0.8	1.5	0.36	1.9	2.8	1.8	5.3
	225.425	85.725	69.85	0.8	8	470	1121	46790/46720D	1	186	219	0.8	8	0.37	1.8	2.7	1.8	10

双内圈双列圆锥滚子轴承(英制系列) (Inch Double-Row Tapered Roller Bearings)



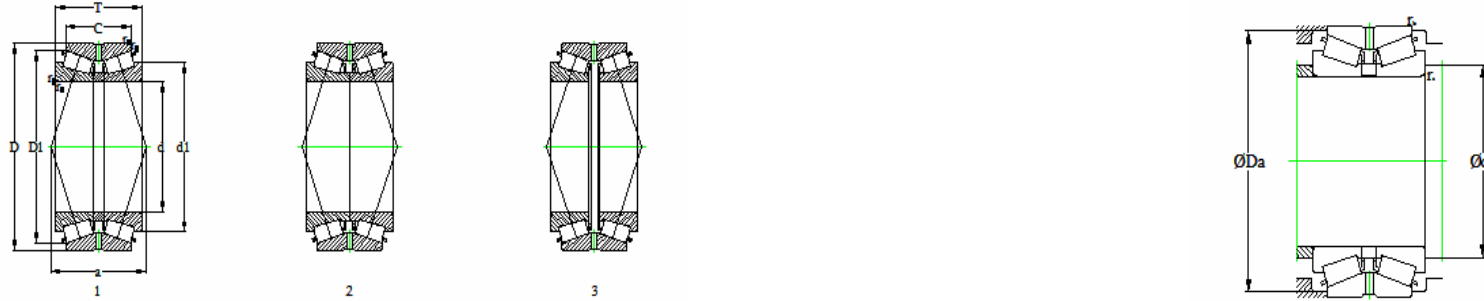
基本尺寸(mm) Boundary Dimensions						基本额定载荷(kN) Basic Load Ratings		轴承代号 Bearing Numbers	结构 Design	相关安装尺寸 Abutment and Fillet Dimensions				计算系数 Calculation Factors				质量(kg) Mass (参考) Refer.
d	D	T	C	r _{1.2min}	r _{3.4min}	Cr	Cor			d _{a min}	D _{a max}	r _{b max}	r _{a max}	e	Y ₁	Y ₂	Y ₀	
165.1	225.425	85.725	69.85	0.8	3.6	442	1140	46790R/46720D	1	177.3	215	0.8	3.6	0.38	1.76	2.62	1.72	9.64
	247.65	103.188	84.138	0.8	3.6	595	1410	67780/67720D	1	194	241	0.8	3.6	0.44	1.5	2.3	1.5	17.2
	247.65	106.362	87.312	0.8	3.6	593	1400	67780/67721D	1	177.3	237.6	0.8	3.6	0.44	1.54	2.29	1.5	17.4
	254	101.6	76.2	1.6	4.8	635	1190	M235145/M235113D	1	191	244	1.6	4.8	0.32	2.1	3.2	2.1	16.4
	288.925	142.875	111.125	1.6	7	1050	1870	HM237535/HM237510D	1	204	278	1.6	7	0.32	2.1	3.2	2.1	35.4
	288.925	142.875	111.125	1.6	7	1111	2166	94649/94114D	1	206	277	1.6	7	0.46	1.5	2.2	1.4	38
	288.925	142.875	111.125	1.6	3.6	1080	1950	HM237536NA/HM237510D	1	177.3	270.2	1.6	3.6	0.32	2.12	3.15	2.07	36.1
	288.925	142.875	111.125	1.6	3.6	943	1920	94650/94114D	1	177.3	269.8	1.6	3.6	0.47	1.44	2.15	1.41	37.8
	288.925	146.05	114.3	1.6	7	1050	1870	HM237535/HM237511D	1	204	278	1.6	7	0.32	2.1	3.2	2.1	36
	298.45	142.875	111.125	1.6	7	943	1920	94649/94118D	1	184.3	269.8	1.6	7	0.47	1.44	2.15	1.41	41.5
	298.45	142.875	111.125	1.6	3.6	943	1920	94650/94118D	1	177.3	269.8	1.6	3.6	0.47	1.44	2.15	1.41	41.6
	347.662	146.05	107.95	1.6	9.7	1310	2010	EE618065/618136D	1	214	326	1.6	9.7	0.33	2	3	2	58.7
368.3	193.675	136.525	1.6	9.7	1500	2690	EE420651/421451D	1	234	353	1.6	9.7	0.42	1.6	2.4	1.6	93	
165.496	225.425	95.25	69.85	0.8	3.6	442	1140	46790R/46720D	1	177.7	215	0.8	3.6	0.38	1.76	2.62	1.72	10.3
166.688	225.425	85.725	69.85	0.8	3.6	442	1140	46792R/46720D	1	178.9	215	0.8	3.6	0.38	1.76	2.62	1.72	9.37
168.275	247.65	103.188	84.138	0.8	3.6	595	1410	67782/67720D	1	195	241	0.8	3.6	0.44	1.5	2.3	1.5	16.5
	247.65	106.362	87.312	0.8	3.6	593	1400	67782/67721D	1	180.5	237.6	0.8	3.6	0.44	1.54	2.29	1.5	16.7
170	254	101.6	76.2	1.6	4.8	635	1190	M235149/M235113D	1	194	244	1.6	4.8	0.32	2.1	3.2	2.1	15.4
171.45	288.925	142.875	111.125	1.6	7	943	1920	94675/94114D	1	190.7	269.8	1.6	7	0.47	1.44	2.15	1.41	35.9
	298.45	142.875	111.125	1.6	7	943	1920	94675/94118D	1	190.7	269.8	1.6	7	0.47	1.44	2.15	1.41	39.6
174.625	247.65	103.188	84.138	0.8	3.6	595	1410	67787/67720D	1	199	241	0.8	3.6	0.44	1.5	2.3	1.5	15.1
	247.65	103.188	84.138	0.8	7.9	593	1400	67786/67720D	1	195.4	237.6	0.8	7.9	0.44	1.54	2.29	1.5	14.8
	247.65	106.362	87.312	0.8	7.9	593	1400	67786/67721D	1	195.4	237.6	0.8	7.9	0.44	1.54	2.29	1.5	15.2
247.65	106.362	87.312	0.8	3.6	593	1400	67787/67721D	1	186.8	237.6	0.8	3.6	0.44	1.54	2.29	1.5	15.3	
	288.925	142.875	111.125	0.8	3.6	940	1900	94687/94114D	1	204	272	0.8	3.6	0.47	1.44	2.15	1.41	33.1
	288.925	142.875	111.125	1.6	7	1080	1950	HM237542/HM237510D	1	193.8	270.2	1.6	7	0.32	2.12	3.15	2.07	33.1

双内圈双列圆锥滚子轴承(英制系列) (Inch Double-Row Tapered Roller Bearings)



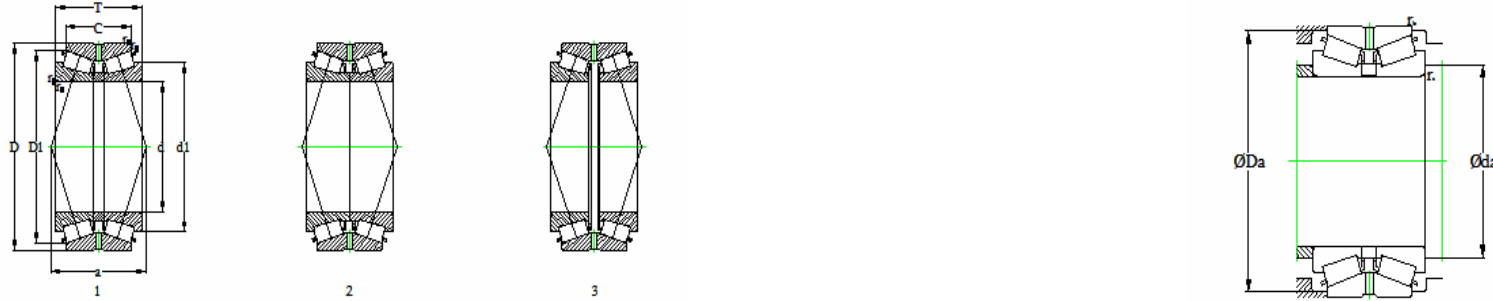
基本尺寸(mm) Boundary Dimensions						基本额定载荷(kN) Basic Load Ratings		轴承代号 Bearing Numbers	结构 Design	相关安装尺寸 Abutment and Fillet Dimensions				计算系数 Calculation Factors				质量(kg) Mass (参考) Refer.
d	D	T	C	r _{1.2min}	r _{3.4min}	Cr	Cor			d _{a min}	D _{a max}	r _{b max}	r _{a max}	e	Y ₁	Y ₂	Y ₀	
174.625	288.925	142.875	111.125	1.6	7	943	1920	94687/94114D	1	193.8	269.8	1.6	7	0.47	1.44	2.15	1.41	34.9
	288.925	146.05	114.3	1.6	7	1050	1870	HM237542/HM237511D	1	209	278	1.6	7	0.32	2.1	3.2	2.1	33.1
	298.45	142.875	111.125	1.6	7	943	1920	94687/94118D	1	193.8	269.8	1.6	7	0.47	1.44	2.15	1.41	38.7
177.8	227.012	66.672	52.388	0.8	1.5	299	785	36990/36920D	1	193	222	0.8	1.5	0.44	1.5	2.3	1.5	6.4
	247.65	103.188	84.138	0.8	3.6	595	1410	67790/67720D	1	200	241	0.8	3.6	0.44	1.5	2.3	1.5	14.4
	247.65	103.188	84.138	0.8	10.4	595	1410	67991/67720D	1	207	241	0.8	10.4	0.44	1.5	2.3	1.5	14.2
	247.65	106.362	87.312	0.8	3.6	593	1400	67790/67721D	1	190	237.6	0.8	3.6	0.44	1.54	2.29	1.5	14.6
	247.65	106.362	87.312	0.8	10.4	593	1400	67791/67721D	1	203.6	237.6	0.8	10.4	0.44	1.54	2.29	1.5	14.4
	269.875	119.062	93.662	1.6	3.6	836	1805	M238840/M238810D	1	208	262	1.6	3.6	0.33	2	3	2	23
	282.575	107.95	79.375	1.6	3.6	702	1450	87700/87112D	1	190	266.3	1.6	3.6	0.42	1.62	2.42	1.59	23.8
	285.75	136.525	92.075	1.6	6.4	775	1450	EE91702/91113XD	1	210	274	1.6	6.4	0.43	1.6	2.3	1.5	28.7
	288.925	142.875	111.125	1.6	7	1050	1870	HM237545/HM237509D	1	210	278	1.6	7	0.32	2.1	3.2	2.1	31.7
	288.925	142.875	111.125	1.6	7	930	1880	94700/94114D	1	213	277	1.6	7	0.47	1.4	2.1	1.4	33.6
	288.925	142.875	111.125	1.6	5.6	1080	1950	HM237545NA/HM237510D	1	194	270.2	1.6	5.6	0.32	2.12	3.15	2.07	32.2
	288.925	142.875	111.125	1.6	5.6	1050	1870	HM237545NA/HM237510D	2	209	278	1.6	5.6	0.32	2.1	3.2	2.1	31.9
288.925	146.05	114.3	1.6	7	1050	1870	HM237545/HM237511D	1	210	278	1.6	7	0.32	2.1	3.2	2.1	32.2	
298.45	142.875	111.125	1.6	7	930	1880	94700/94118D	1	213	282	1.6	7	0.47	1.4	2.1	1.4	37.5	
304.8	147.838	98.425	1.6	6.4	939	1600	EE280702/281201D	1	195.6	281.2	1.6	6.4	0.36	1.87	2.79	1.83	37.2	
320.675	185.738	138.112	1.6	3.6	1470	2530	H239640/H239612D	1	215	309	1.6	3.6	0.32	2.1	3.2	2.1	55.6	
320.675	185.738	138.112	1.6	3.6	1270	2420	177KBE3251	1	218	309	1.6	3.6	0.49	1.4	2.1	1.4	58.9	
320.675	185.738	138.112	1.6	3.6	1280	2450	EE222070/222127D	1	190	297.9	1.6	3.6	0.4	1.68	2.5	1.64	59	
368.3	193.675	136.525	1.6	12.7	1500	2690	EE420701/421451D	1	243	353	1.6	12.7	0.42	1.6	2.4	1.6	87.6	
179.972	317.5	146.05	111.125	1.6	3.6	990	2120	93708/93127D	1	224	306	1.6	3.6	0.52	1.3	1.9	1.3	46.9
	319.976	146.05	111.125	1.6	3.6	990	2120	93708/93128XD	1	224	307	1.6	3.6	0.52	1.3	1.9	1.3	49.1
184.15	236.538	55.56	41.275	0.8	1.5	265	580	LL537649/LL537610D	1	199	230	0.8	1.5	0.37	1.8	2.7	1.8	5.5
	242.888	95.25	69.85	0.8	3.6	425	1200	LM637349NW/LM637310D	2	199	236	0.8	3.6	0.42	1.6	2.4	1.6	11.5
	266.7	103.188	84.138	0.8	3.6	590	1440	67883/67820D	1	212	260	0.8	3.6	0.48	1.4	2.1	1.4	18.4

双内圈双列圆锥滚子轴承(英制系列) (Inch Double-Row Tapered Roller Bearings)



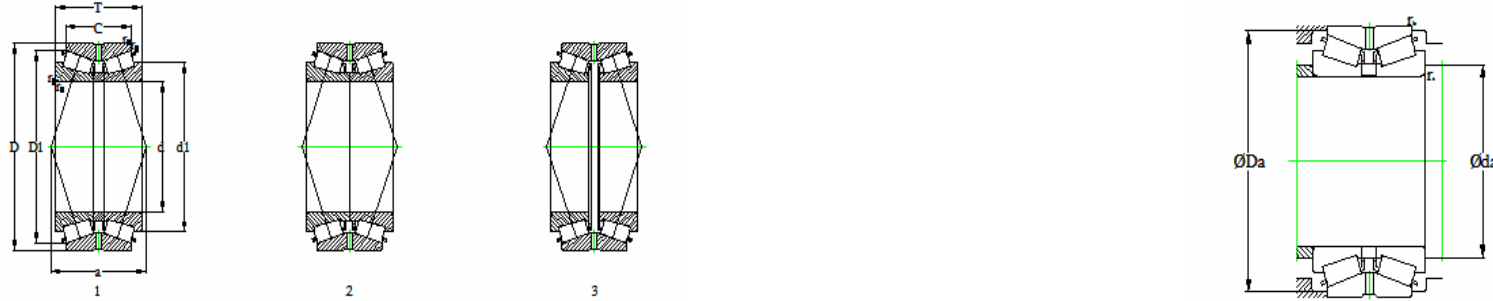
基本尺寸(mm) Boundary Dimensions						基本额定载荷(kN) Basic Load Ratings		轴承代号 Bearing Numbers	结构 Design	相关安装尺寸 Abutment and Fillet Dimensions				计算系数 Calculation Factors				质量(kg) Mass (参考) Refer.
d	D	T	C	r _{1.2min}	r _{3.4min}	Cr	Cor			d _{a min}	D _{a max}	r _{b max}	r _{a max}	e	Y ₁	Y ₂	Y ₀	
187. 325	266. 7	103. 188	84. 138	0. 8	3. 6	614	1520	67884/67820D	1	199. 5	256. 5	0. 8	3. 6	0. 48	1. 41	2. 11	1. 38	18
	269. 875	119. 062	93. 662	1. 6	3. 6	704	1610	M238849/M238810D	1	199. 5	255	1. 6	3. 6	0. 33	2. 03	3. 02	1. 98	20. 4
	282. 575	107. 95	79. 375	1. 6	3. 6	702	1450	87737/87112D	1	199. 5	266. 3	1. 6	3. 6	0. 42	1. 62	2. 42	1. 59	21. 4
	320. 675	185. 738	138. 112	1. 6	5. 6	1470	2530	H239649/H239612D	1	222	309	1. 6	5. 6	0. 32	2. 1	3. 2	2. 1	51. 6
	320. 675	185. 738	138. 112	1. 6	5. 6	1280	2450	222075/222127D	1	203. 5	297. 9	1. 6	5. 6	0. 4	1. 68	2. 5	1. 64	55
	320. 675	185. 738	138. 112	1. 6	5. 6	1470	2530	H239649NA/H239612D	2	222	309	1. 6	5. 6	0. 32	2. 1	3. 2	2. 1	51. 8
190. 5	266. 7	103. 188	84. 138	0. 8	3. 6	590	1440	67885/67820D	1	215	260	0. 8	3. 6	0. 48	1. 4	2. 1	1. 4	16. 9
	282. 575	107. 95	79. 375	1. 6	3. 6	615	1200	87750/87112D	1	217	273	1. 6	3. 6	0. 42	1. 6	2. 4	1. 6	20. 2
	317. 5	146. 05	111. 125	1. 6	4. 3	990	2120	93750/93127D	1	231	306	1. 6	4. 3	0. 52	1. 3	1. 9	1. 3	43. 7
192. 088	319. 977	146. 05	111. 125	1. 6	4. 3	1040	2270	93750/93128XD	1	204. 1	294. 5	1. 6	4. 3	0. 52	1. 29	1. 92	1. 26	44. 8
	368. 3	193. 675	136. 525	1. 6	6. 4	1610	2920	EE420751/421451D	1	208. 3	334	1. 6	6. 4	0. 4	1. 68	2. 5	1. 64	85. 2
192. 088	266. 7	103. 188	84. 138	0. 8	10. 4	614	1520	67887/67820D	1	217. 9	256. 5	0. 8	10. 4	0. 48	1. 41	2. 11	1. 38	16. 6
193. 675	282. 575	107. 95	79. 375	1. 6	3. 6	702	1450	87762/87112D	1	205. 9	266. 3	1. 6	3. 6	0. 42	1. 62	2. 42	1. 59	19. 8
196. 85	254	61. 91	47. 625	0. 8	1. 5	305	715	L540049/L540010D	1	213	247	0. 8	1. 5	0. 4	1. 7	2. 5	1. 7	7. 4
	257. 175	85. 725	66. 675	0. 8	3. 6	459	1260	LM739749/LM739710D	1	209. 1	247	0. 8	3. 6	0. 45	1. 51	2. 25	1. 48	11. 2
	317. 5	146. 05	111. 125	1. 6	4. 3	990	2120	93775/93127D	1	234	306	1. 6	4. 3	0. 52	1. 3	1. 9	1. 3	41. 5
	319. 977	146. 05	111. 125	1. 6	4. 3	1040	2270	93775/93128XD	1	210. 5	294. 5	1. 6	4. 3	0. 52	1. 29	1. 92	1. 26	42. 6
200. 025	292. 1	125. 415	101. 6	1. 6	4. 3	915	2070	M241543/M241510D	1	219	279	1. 6	4. 3	0. 33	1. 03	3. 02	1. 98	24. 8
	317. 5	146. 05	111. 125	1. 6	4. 3	1040	2270	93787/93127D	1	214. 6	294. 5	1. 6	4. 3	0. 52	1. 29	1. 92	1. 26	40. 5
	319. 977	146. 05	111. 125	1. 6	4. 3	1040	2270	93787/93128XD	1	214. 6	294. 5	1. 6	4. 3	0. 52	1. 29	1. 92	1. 26	41. 5
	333. 375	149. 225	114. 3	1. 6	6. 4	1210	240	HM743337/HM743310D	1	218. 8	315. 5	1. 6	6. 4	0. 44	1. 54	2. 29	1. 5	49. 4
	355. 6	152. 4	111. 125	1. 6	6. 4	1190	2470	EE130787/131401D	1	250	340	1. 6	6. 4	0. 33	3	0. 33	2	60. 3
201. 612	355. 6	158. 75	117. 475	0. 8	6. 8	1190	2470	EE130787/131402D	1	250	341	0. 8	6. 8	0. 33	3	0. 33	2	62. 4
	384. 175	238. 125	193. 675	1. 6	6. 4	2090	4450	H247535/H247510D	1	258	369	1. 6	6. 4	0. 33	3	0. 33	2	122
	317. 5	146. 05	111. 125	1. 6	4. 3	1110	2280	93787/93127D	1	225	300	1. 6	4. 3	0. 52	1. 3	1. 9	1. 3	41. 5
201. 612	368. 3	193. 675	136. 525	1. 6	4. 3	1500	2690	EE420793/421451D	1	246	353	1. 6	4. 3	0. 42	2. 4	0. 42	1. 6	77. 2

双内圈双列圆锥滚子轴承(英制系列) (Inch Double-Row Tapered Roller Bearings)



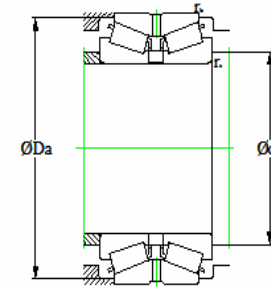
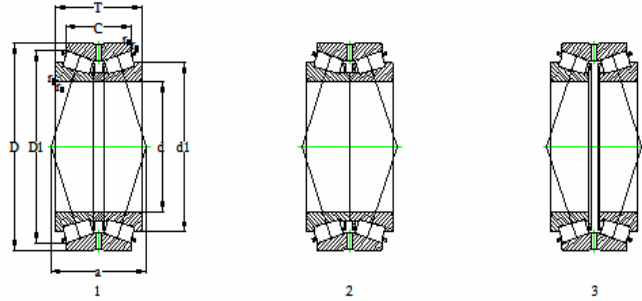
基本尺寸(mm) Boundary Dimensions						基本额定载荷(kN) Basic Load Ratings		轴承代号 Bearing Numbers	结构 Design	相关安装尺寸 Abutment and Fillet Dimensions				计算系数 Calculation Factors				质量(kg) Mass (参考) Refer.
d	D	T	C	r _{1.2min}	r _{3.4min}	Cr	Cor			d _{a min}	D _{a max}	r _{b max}	r _{a max}	e	Y ₁	Y ₂	Y ₀	
203.2	276.225	90.485	73.025	0.8	3.6	580	1240	LM241149/LM241110D	1	224	269	0.8	3.6	0.32	3.2	0.32	2.1	13.9
	276.225	95.25	73.025	0.8	3.6	580	1240	LM241149NW/LM241110D	2	226	269	0.8	3.6	0.32	2.1	3.2	2.1	14.7
	282.575	101.6	82.55	0.8	3.6	598	1410	67983/67920D	1	216.4	271.5	0.8	3.6	0.51	1.33	1.97	1.3	18.3
	282.575	107.95	88.9	0.8	3.6	598	1410	67983/67921D	1	216.4	271.5	0.8	3.6	0.51	1.33	1.97	1.3	19.3
	292.1	125.415	101.6	1.6	3.6	930	2100	M241547/M241510D	1	229	293	1.6	3.6	0.33	3	0.33	2	25.7
	317.5	120.65	88.9	1.6	6.4	753	1450	132083/132126D	1	222	282.3	1.6	6.4	0.31	2.15	3.21	2.11	30.9
	317.5	127	88.9	1.6	4	790	1450	EE132083/132126D	1	232	302	1.6	4	0.31	3.2	0.31	2.1	30.6
	317.5	146.05	111.125	1.6	4	990	2120	93800/93127D	1	237	306	1.6	4	0.52	1.9	0.52	1.3	39
	317.5	146.05	111.125	1.6	7.9	1040	2270	93800A/93127D	1	225	294.5	1.6	7.9	0.52	1.29	1.92	1.26	39.2
	319.976	146.05	111.125	1.6	4.3	990	2120	93800/93128D	1	237	307	1.6	4.3	0.52	1.9	0.52	1.3	40.5
	368.3	193.675	136.525	1.6	3.2	1500	2690	EE420801/421451D	1	246	353	1.6	3.2	0.42	2.4	0.42	1.6	76.4
	371.475	193.675	136.525	1.6	3.2	1610	2920	EE420801/421462XD	1	215.6	334	1.6	3.2	0.4	1.68	2.5	1.64	81.3
406.4	196.85	127	3.2	6.4	1600	2610	EE114080/114161D	1	260	386	3.2	6.4	0.79	0.85	1.3	0.83	102	
203.238	406.4	196.85	127	3.2	6.4	1630	2920	EE114081/114161D	1	222	367.5	3.2	6.4	0.79	0.85	1.27	0.83	105
	292.1	125.415	101.6	1.6	3.6	934	2050	M241549/M241510D	1	218	277.7	1.6	3.6	0.33	2.03	3.02	1.98	24.4
	317.5	146.05	111.125	1.6	4.3	1040	2270	93806A/93127D	1	219.4	294.5	1.6	4.3	0.52	1.29	1.92	1.26	38.8
319.977	146.05	111.125	1.6	4.3	1040	2270	93806A/93128XD	1	219.4	294.5	1.6	4.3	0.52	1.29	1.92	1.26	39.8	
206.375	282.575	101.6	82.55	0.8	3.6	630	1600	67985/67920D	1	231	276	0.8	3.6	0.51	2	0.51	1.3	18.2
	282.575	107.95	88.9	0.8	3.6	598	1410	67985/67921D	1	219.6	271.5	0.8	3.6	0.51	1.33	1.97	1.3	18.4
	317.5	127	88.9	1.6	4	790	1450	EE132084/132126D	1	234	302	1.6	4	0.31	3.2	0.31	2.1	29.6
336.55	211.138	169.862	1.6	3.2	2014	4085	H242649/H242610D	1	242	325	1.6	3.2	0.33	2	3	2	70	
209.55	282.575	101.6	82.55	0.8	3.6	598	1410	67989/67920D	1	222.8	271.5	0.8	3.6	0.51	1.33	1.97	1.3	16.7
	317.5	146.05	111.125	1.6	4.3	990	2120	93825/93127D	1	240	306	1.6	4.3	0.52	1.3	1.9	1.3	37.1
	317.5	146.05	111.125	1.6	12.7	1040	2270	93825A/93127D	1	241	294.5	1.6	12.7	0.52	1.29	1.92	1.26	36.7
333.375	149.225	114.3	1.6	6.4	1180	2380	HM743345/HM743310D	1	247	322	1.6	6.4	0.44	1.5	2.3	1.5	45.3	
355.6	152.4	111.125	1.6	7.1	1130	2630	96825/96140D	1	229.8	331.4	1.6	7.1	0.59	1.14	1.7	1.12	60	

双内圈双列圆锥滚子轴承(英制系列) (Inch Double-Row Tapered Roller Bearings)



基本尺寸(mm) Boundary Dimensions						基本额定载荷(kN) Basic Load Ratings		轴承代号 Bearing Numbers	结构 Design	相关安装尺寸 Abutment and Fillet Dimensions				计算系数 Calculation Factors				质量(kg) Mass (参考) Refer.
d	D	T	C	r _{1.2min}	r _{3.4min}	Cr	Cor			d _{a min}	D _{a max}	r _{b max}	r _{a max}	e	Y ₁	Y ₂	Y ₀	
212. 725	285. 75	98. 425	76. 2	0. 8	3. 6	600	1510	LM742745/LM742710D	1	237	280	0. 8	3. 6	0. 48	1. 4	2. 1	1. 4	16. 8
	288. 925	98. 425	76. 2	0. 8	3. 6	611	1560	LM742745/LM742714D	1	225. 9	276. 4	0. 8	3. 6	0. 48	1. 4	2. 09	1. 37	17. 6
215. 9	285. 75	98. 425	76. 2	0. 8	3. 6	611	1560	LM742749/LM742710D	1	229. 1	276. 4	0. 8	3. 6	0. 48	1. 4	2. 09	1. 37	15. 9
	287. 338	69. 85	50. 8	0. 8	3. 6	396	945	543085/543115D	1	229. 1	272. 4	0. 8	3. 6	0. 38	1. 76	2. 62	1. 72	11. 4
	288. 925	98. 425	76. 2	0. 8	3. 6	611	1560	LM742749/LM742714D	1	229. 1	276. 4	0. 8	3. 6	0. 48	1. 4	2. 09	1. 37	16. 8
219. 075	355. 6	152. 4	111. 125	1. 6	6. 8	1250	2610	EE130851/131401D	1	235. 3	330	1. 6	6. 8	0. 33	2. 04	3. 04	2	55. 7
	355. 6	158. 75	117. 475	0. 8	6. 8	1250	2610	EE130851/131402D	1	235. 3	330	0. 8	6. 8	0. 33	2. 04	3. 04	2	57. 6
	406. 4	195. 262	147. 638	1. 6	6. 4	2040	3600	EE820085/820161D	1	267	389	1. 6	6. 4	0. 39	1. 7	2. 5	1. 7	101
219. 075	358. 775	196. 85	181. 44	1. 6	6. 4	1660	3590	543086/543115D	1	237. 9	337. 2	1. 6	6. 4	0. 33	2. 03	3. 02	1. 98	78. 3
219. 969	287. 338	69. 85	50. 8	0. 8	3. 6	396	94	543086/543115D	1	233. 2	272. 4	0. 8	3. 6	0. 38	1. 76	2. 62	1. 72	10. 6
220. 662	314. 325	131. 762	106. 362	1. 6	6. 4	1020	2390	M244249/M244210D	1	250	305	1. 6	6. 4	0. 33	2	3	2	30. 9
225. 425	355. 6	152. 4	111. 125	1. 6	6. 8	1190	2470	EE130889/131401D	1	263	340	1. 6	6. 8	0. 33	2	3	2	50. 2
	355. 6	158. 75	117. 475	0. 8	6. 7	1250	2610	EE130889/131402D	1	244. 8	330	0. 8	6. 7	0. 33	2. 04	3. 04	2	53. 6
	400. 05	187. 325	136. 525	1. 6	1. 5	1620	3000	EE430888/431576D	1	266	379	1. 6	1. 5	0. 44	1. 5	2. 3	1. 5	88
228. 397	431. 8	196. 85	111. 125	3. 2	6. 4	1520	2640	EE113089/113171D	1	287	410	3. 2	6. 4	0. 88	0. 77	1. 1	0. 75	105
228. 46	431. 8	196. 85	111. 125	3. 2	6. 4	1700	2890	EE113091/113171D	1	247. 3	396. 8	3. 2	6. 4	0. 88	0. 76	1. 14	0. 75	111
228. 6	327. 025	114. 3	82. 55	1. 6	6. 4	800	2014	8573/8520D	1	261	316	1. 6	6. 4	0. 4	1. 7	2. 5	1. 6	30
	328. 625	114. 3	82. 55	1. 6	6. 4	802	1860	8573/8522D	1	247. 4	309. 8	1. 6	6. 4	0. 41	1. 66	2. 47	1. 62	28. 8
	355. 6	146. 05	111. 125	1. 6	6. 4	1250	2610	130902/131401D	1	247. 4	330	1. 6	6. 4	0. 33	2. 04	3. 04	2	49. 4
228. 6	355. 6	152. 4	111. 125	1. 6	7	1190	2470	EE130902/131401D	1	265	340	1. 6	7	0. 33	2	3	2	48. 8
	355. 6	152. 4	111. 125	1. 6	7	1030	2340	96900/96140D	1	270	342	1. 6	7	0. 59	1. 1	1. 7	1. 1	51
	355. 6	152. 4	114. 3	1. 6	6. 4	1310	2590	HM746646/HM746610D	1	266	345	1. 6	6. 4	0. 47	1. 4	2. 1	1. 4	49. 1
228. 6	355. 6	152. 4	111. 125	1. 6	7	1250	2610	EE130902/131401D	1	248	330	1. 6	7	0. 33	2. 04	3. 04	2	50. 4
	355. 6	152. 4	111. 125	1. 6	7	1130	2630	96900/96140D	1	248. 8	331. 4	1. 6	7	0. 59	1. 14	1. 7	1. 12	52. 3

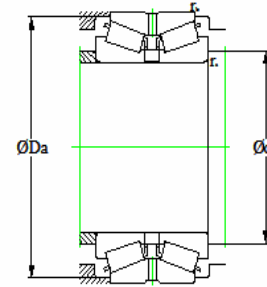
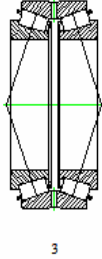
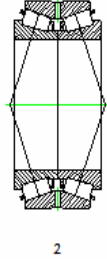
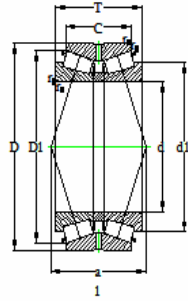
双内圈双列圆锥滚子轴承(英制系列) (Inch Double-Row Tapered Roller Bearings)



基本尺寸(mm) Boundary Dimensions						基本额定载荷(kN) Basic Load Ratings		轴承代号 Bearing Numbers	结构 Design	相关安装尺寸 Abutment and Fillet Dimensions				计算系数 Calculation Factors				质量(kg) Mass (参考) Refer.
d	D	T	C	r _{1.2min}	r _{3.4min}	Cr	Cor			d _{a min}	D _{a max}	r _{b max}	r _{a max}	e	Y ₁	Y ₂	Y ₀	
228.6	355.6	158.75	117.475	0.8	6.8	1190	2470	EE130902/131402D	1	265	341	0.8	6.8	0.33	2	3	2	50.4
	358.775	152.4	117.475	1.6	3.6	1463	3372	M249732/M249710D	1	256	343	1.6	3.6	0.33	2	3	2	57
	400.05	17.325	136.525	1.6	19.8	1690	3210	EE430902/431576D	1	274.2	363.1	1.6	19.8	0.44	1.54	2.29	1.5	86.7
231.775	400.05	187.325	136.525	1.6	10.4	1620	3000	EE430900/431576D	1	277	379	1.6	10.4	0.44	1.5	2.3	1.5	86.1
	425.45	209.55	158.75	1.6	7	2200	4000	EE700091/700168D	1	281	406	1.6	7	0.33	2	3	2	118
	488.95	254	152.4	1.6	6.4	2774	4275	HH949549/HH949510D	1	307	470	1.6	6.4	0.94	0.7	1.1	0.7	205
231.775	358.775	152.4	117.475	1.6	6.4	1330	3170	M249734/M249710D	1	250.6	342.1	1.6	6.4	0.33	2.03	3.02	1.98	55
234.95	311.15	98.425	73.025	0.8	3.6	640	1610	LM446349/LM446310D	1	259	304	0.8	3.6	0.36	1.9	2.8	1.8	18.8
	311.15	101.6	73.025	0.8	3.6	640	1610	LM446349NW/LM446310D	2	259	304	0.8	3.6	0.36	1.9	2.8	1.8	19.3
	327.025	114.3	82.55	1.6	6.4	805	1880	8575/8520D	1	264	316	1.6	6.4	0.41	1.7	2.5	1.6	26.1
237.33	328.625	114.3	82.55	1.6	6.4	802	1860	8575/8522D	1	253.8	309.8	1.6	6.4	0.41	1.66	2.47	1.62	26.7
	355.6	152.4	111.125	1.6	7	1030	2340	96925/96140D	1	273	342	1.6	7	0.59	1.1	1.7	1.1	48.3
	384.175	238.125	193.675	1.6	6.4	2090	4450	H247549/H247510D	1	276	369	1.6	6.4	0.33	2	3	2	99.7
237.33	358.775	152.4	117.475	1.6	6.4	1330	3170	M249736/M249710D	1	256.1	342.1	1.6	6.4	0.33	2	3	2	52.6
241.3	327.025	114.3	82.55	1.6	6.4	805	1880	8578/8520D	1	267	316	1.6	6.4	0.41	1.7	2.5	1.6	23.9
	328.625	114.3	82.55	1.6	6.4	802	1860	8578/8522D	1	260.1	309.8	1.6	6.4	0.41	1.66	2.47	1.62	24.6
	349.148	127	101.6	1.6	6.4	950	2050	EE127095/127136D	1	260.1	329.6	1.6	6.4	0.35	1.91	2.84	1.86	36.4
241.3	350.838	127	101.6	1.6	6.4	980	2130	EE127095/127137D	1	274	338	1.6	6.4	0.35	1.9	2.8	1.9	36.9
	355.498	127	101.6	1.6	6.4	980	2130	EE127095/127139D	1	274	341	1.6	6.4	0.35	1.9	2.8	1.9	38.9
	368.3	120.65	85.725	1.6	6.4	870	1850	EE170950/171451D	1	260.1	335.8	1.6	6.4	0.36	1.86	2.77	1.82	41.7
241.3	393.7	157.162	109.538	1.6	6.4	1200	2570	EE275095/275156D	1	293	382	1.6	6.4	0.4	1.7	2.5	1.6	68
	406.4	155.58	107.95	1.6	6.4	1200	2570	EE275095/275161D	1	293	389	1.6	6.4	0.4	1.7	2.5	1.6	74.2
	406.4	215.9	184.15	1.6	6.4	2220	4450	H249148/H249111D	1	287	392	1.6	6.4	0.33	2	3	2	105
241.3	444.5	209.55	158.75	1.6	6.4	2410	4500	EE923095/923176D	1	295	423	1.6	6.4	0.34	2	3	2	133
	488.95	254	196.85	1.6	6.4	2950	5700	EE295950/295192D	1	315	469	1.6	6.4	0.31	2.2	3.2	2.1	207

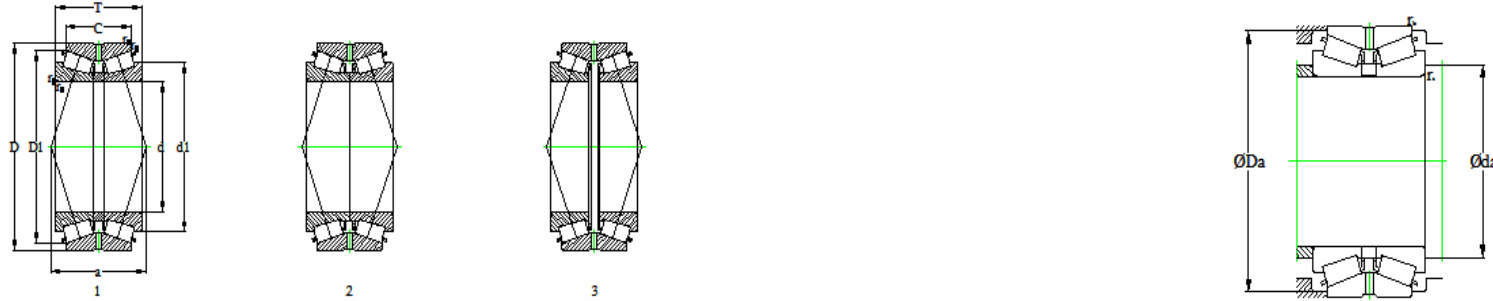
双内圈双列圆锥滚子轴承(英制系列) (Inch Double-Row Tapered Roller Bearings)

WRT



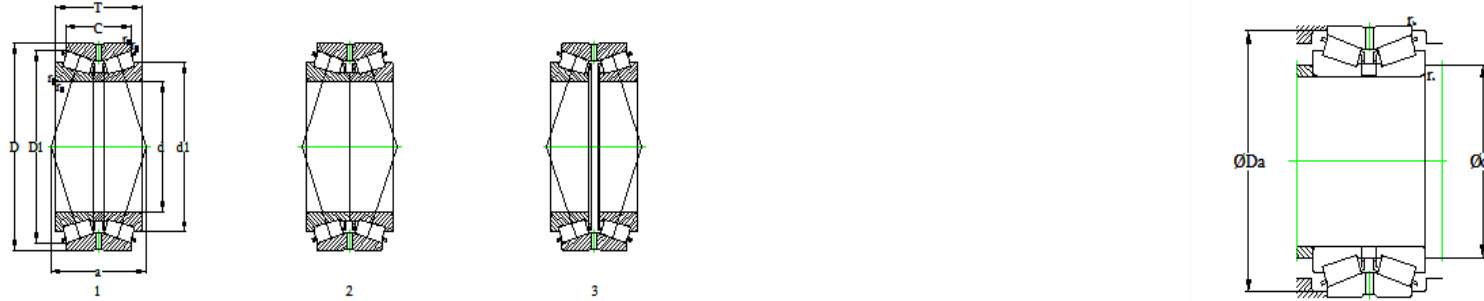
基本尺寸(mm) Boundary Dimensions						基本额定载荷(kN) Basic Load Ratings		轴承代号 Bearing Numbers	结构 Design	相关安装尺寸 Abutment and Fillet Dimensions				计算系数 Calculation Factors				质量(kg) Mass (参考) Refer.
d	D	T	C	r _{1.2min}	r _{3.4min}	Cr	Cor			d _{a min}	D _{a max}	r _{b max}	r _{a max}	e	Y ₁	Y ₂	Y ₀	
244. 475	349. 148	133. 35	101. 6	1. 6	6. 4	950	2050	EE127096/127136D	1	263. 3	329. 6	1. 6	6. 4	0. 35	1. 91	2. 84	1. 86	36. 3
	380. 898	171. 45	127	1. 6	6. 4	1350	2930	EE126097/126149D	1	263. 3	356. 4	1. 6	6. 4	0. 52	1. 31	1. 95	1. 28	65. 9
	381	171. 45	127	1. 6	6. 4	1410	3100	EE126097/126151D	1	286	367	1. 6	6. 4	0. 52	1. 3	1. 9	1. 3	65. 1
247. 65	368. 3	120. 65	85. 725	1. 6	6. 4	870	1850	EE170975/171451D	1	266. 5	335. 8	1. 6	6. 4	0. 36	1. 86	2. 77	1. 82	39. 4
	406. 4	247. 65	203. 2	1. 6	6. 4	2770	6250	HH249949/HH249910D	1	266. 5	382. 5	1. 6	6. 4	0. 33	2. 03	3. 02	1. 98	123
249. 25	380. 898	171. 45	127	1. 6	6. 4	1350	2930	EE126098/126149D	1	268. 1	356. 4	1. 6	6. 4	0. 52	1. 31	1. 95	1. 28	63. 5
	381	171. 45	127	1. 6	6. 4	1410	3100	EE126098/126151D	1	288	367	1. 6	6. 4	0. 52	1. 3	1. 9	1. 3	62. 6
254	323. 85	63. 5	50. 8	0. 8	1. 5	263	760	29875/29820D	1	276	315	0. 8	1. 5	0. 35	1. 9	2. 9	1. 9	12. 4
	347. 662	95. 25	69. 85	1. 6	3. 6	755	1610	LM249748/LM249710D	1	278	336	1. 6	3. 6	0. 33	2	3	2	23. 1
	347. 662	101. 6	69. 85	1. 6	3. 6	780	1760	LM249747NW/LM249710D	2	285	338	1. 6	3. 6	0. 33	2	3	2	25. 3
	358. 775	152. 4	117. 475	1. 6	3. 6	1300	3100	M249749/M249710D	1	284	348	1. 6	3. 6	0. 33	2	3	2	44. 6
	365. 125	130. 175	98. 425	1. 6	6. 4	990	2200	EE134100/134144D	1	289	354	1. 6	6. 4	0. 37	1. 8	2. 7	1. 8	39. 8
	393. 7	157. 162	109. 538	1. 6	6. 4	1200	2570	EE275100/275156D	1	299	382	1. 6	6. 4	0. 4	1. 7	2. 5	1. 6	61. 9
406. 4	155. 575	107. 95	1. 6	6. 4	1270	3090	EE275100/275161D	1	272. 8	377. 8	1. 6	6. 4	0. 4	1. 68	2. 5	1. 64	73. 4	
	422. 275	173. 038	128. 588	1. 6	6. 8	1950	3700	HM252343/HM252311D	1	301	408	1. 6	6. 8	0. 33	2	3	2	86. 6
	422. 275	173. 038	128. 588	1. 6	1. 6	1730	3360	HM252349NA/HM252311D	1	263. 2	397. 9	1. 6	1. 6	0. 33	2. 03	3. 02	1. 98	87. 3
422. 275	173. 038	128. 588	1. 6	6. 4	1950	3700	HM252344/HM252311D	2	301	408	1. 6	6. 4	0. 33	2	3	2	86. 8	
	178. 592	139. 7	1. 6	6. 8	2128	3847	HM252343/HM252310D	1	301	408	1. 6	6. 8	0. 33	2	3	2	97. 5	
	178. 592	139. 7	1. 6	6. 8	1730	3360	HM252343/HM252312D	1	273. 4	399. 1	1. 6	6. 8	0. 33	2. 03	3. 02	1. 98	90. 3	
431. 724	173. 038	128. 588	1. 6	6. 8	1730	3360	HM252343/HM252315D	1	273. 4	397. 9	1. 6	6. 8	0. 33	2. 03	3. 02	1. 98	93. 3	
	173. 038	128. 588	1. 6	6. 4	1680	3420	551002/551701D	1	272. 8	388. 3	1. 6	6. 4	0. 33	2. 03	3. 02	1. 98	93	
	173. 038	128. 588	1. 6	6. 4	1950	3700	HM252343NA/HM252315D	2	301	413	1. 6	6. 4	0. 33	2	3	2	93. 4	
444. 5	165. 1	114. 3	1. 6	6. 4	1470	2770	EE822100/822176D	1	272. 8	406. 2	1. 6	6. 4	0. 42	1. 62	2. 42	1. 59	93. 9	
	162. 245	120. 65	1. 6	6. 4	1750	3220	EE941002/941951XD	1	272. 8	455. 7	1. 6	6. 4	0. 4	1. 68	2. 5	1. 64	135	
	168. 595	127	1. 6	6. 4	1750	3220	EE941002/941953D	1	272. 8	455. 7	1. 6	6. 4	0. 4	1. 68	2. 5	1. 64	139	
	276. 225	165. 1	1. 6	6. 4	3296	5225	HH953749/HH953710D	1	332	511	1. 6	6. 4	0. 94	0. 7	1. 1	0. 7	260	
258. 763	400. 05	155. 575	107. 95	1. 6	9. 5	1300	2570	EE221018/221576D	1	283. 8	371. 2	1. 6	9. 5	0. 39	1. 71	2. 54	1. 67	59. 2

双内圈双列圆锥滚子轴承(英制系列) (Inch Double-Row Tapered Roller Bearings)



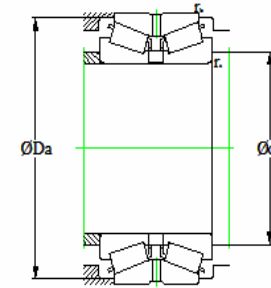
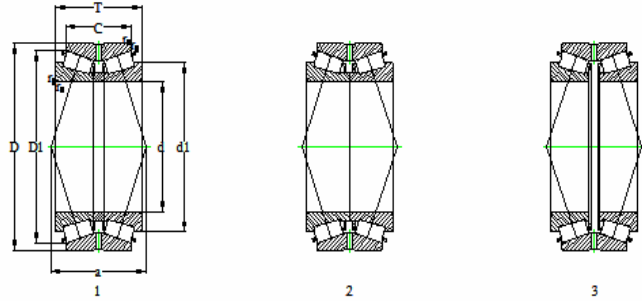
基本尺寸(mm) Boundary Dimensions						基本额定载荷(kN) Basic Load Ratings		轴承代号 Bearing Numbers	结构 Design	相关安装尺寸 Abutment and Fillet Dimensions				计算系数 Calculation Factors				质量(kg) Mass (参考) Refer.	
d	D	T	C	r _{1.2min}	r _{3.4min}	Cr	Cor			d _{a min}	D _{a max}	r _{b max}	r _{a max}	e	Y ₁	Y ₂	Y ₀		
260.35	365.125	130.175	98.425	1.6	6.4	990	2200	EE134102/134144D	1	293	354	1.6	6.4	0.37	1.8	2.7	1.8	37.2	
	400.05	146.05	107.95	1.6	6.4	1300	2570	221026/221576D	1	279.2	371.2	1.6	6.4	0.39	1.71	2.54	1.67	56.7	
	400.05	155.575	107.95	1.6	9.7	1260	2440	EE221026/221576D	1	300	383	1.6	9.7	0.39	1.7	2.5	1.7	58.3	
263.525	406.4	149.225	117.475	1.6	3.2	1290	2870	EE128102/128160D	1	302	391	1.6	3.2	0.39	1.8	2.6	1.7	66.8	
	419.1	184.15	136.525	1.6	3.2	1580	3250	EE435102/435165D	1	295	395	1.6	3.2	0.61	1.11	1.66	1.09	86.8	
	422.275	173.038	128.588	1.6	6.8	1950	3700	HM252349/HM252311D	1	304	408	1.6	6.8	0.33	2	3	2	83.1	
	422.275	178.592	139.7	1.6	6.8	2128	3847	HM252349/HM252310D	1	304	408	1.6	6.8	0.33	2	3	2	86.5	
	422.275	178.598	139.7	1.6	6.8	1670	3200	EE551026/551663D	1	302	404	1.6	6.8	0.33	2	3	2	85.3	
	422.91	178.592	139.7	1.6	6.8	1730	3360	HM252349/HM252312D	1	279.8	399.1	1.6	6.8	0.33	2.03	3.02	1.98	86.7	
	431.724	173.038	128.588	1.6	6.8	1730	3360	HM252349/HM252315D	1	279.8	397.9	1.6	6.8	0.33	2.03	3.02	1.98	89.9	
	431.724	173.038	128.588	1.6	6.4	1950	3700	HM252349NA/HM252315D	2	304	413	1.6	6.4	0.33	2	3	2	89.9	
	488.95	254	196.85	1.6	6.4	2950	5700	EE295102/295192D	1	325	469	1.6	6.4	0.31	2.2	3.2	2.1	193	
731.724	173.038	128.588	1.6	6.4	1730	3360	HM252348NA/HM252315D	1	279.2	397.9	1.6	6.4	0.33	2.03	3.02	1.98	90		
263.525	355.6	127	101.6	1.6	3.6	1040	2550	LM451345/LM451310D	1	276.7	342.6	1.6	3.6	0.36	1.87	2.79	1.83	33.1	
	357.2	127	101.6	1.6	3.6	1040	2550	LM451345/LM451312D	1	276.7	342.6	1.6	3.6	0.36	1.87	2.79	1.83	33.8	
266.7	323.85	63.5	50.8	0.8	1.6	252	723	29880/29820D	1	275.9	307.1	0.8	1.6	0.35	1.95	2.9	1.91	9.57	
	352.425	107.95	82.55	1.6	6.4	855	2110	LM251649NW/LM251610D	2	295	343	1.6	6.4	0.32	2.1	3.2	2.1	26.3	
	355.6	127	101.6	1.6	3.6	1060	2520	LM451349/LM451310D	1	292	348	1.6	3.6	0.36	1.9	2.8	1.8	31.2	
	355.6	127	101.6	1.6	10.4	1040	2550	LM451349A/LM451310D	1	293.5	342.6	1.6	10.4	0.36	1.87	2.79	1.83	31.5	
	357.2	127	101.6	1.6	3.6	1060	2520	LM451349/LM451312D	1	292	348	1.6	3.6	0.36	1.9	2.8	1.8	32	
	393.7	157.162	109.538	1.6	6.4	1200	2570	EE275105/275156D	1	306	382	1.6	6.4	0.4	1.7	2.5	1.6	56.6	
	406.4	155.575	107.95	1.6	6.4	1200	2570	EE275105/275161D	1	306	389	1.6	6.4	0.4	1.7	2.5	1.6	62.8	
	422.275	178.598	139.7	1.6	6.8	1670	3200	EE551050/551663D	1	306	404	1.6	6.8	0.33	2	3	2	81.6	
	431.724	173.038	128.588	1.6	6.8	1670	3200	EE551050/551701D	1	306	408	1.6	6.8	0.33	2	3	2	84.9	
	269.875	381	158.75	123.825	1.6	6.4	1360	3200	M252349/M252310D	1	304	370	1.6	6.4	0.33	2	3	2	51.6
	273.05	393.7	157.162	109.538	1.6	6.4	1200	2570	EE275108/275156D	1	309	382	1.6	6.4	0.4	1.7	2.5	1.6	53.3
		406.4	155.575	107.95	1.6	6.4	1270	3090	EE275108/275161D	1	291.9	377.8	1.6	6.4	0.4	1.68	2.5	1.64	63.8

双内圈双列圆锥滚子轴承(英制系列) (Inch Double-Row Tapered Roller Bearings)



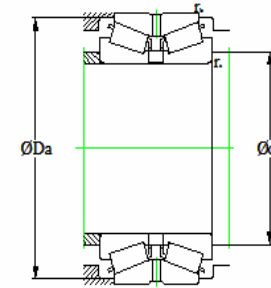
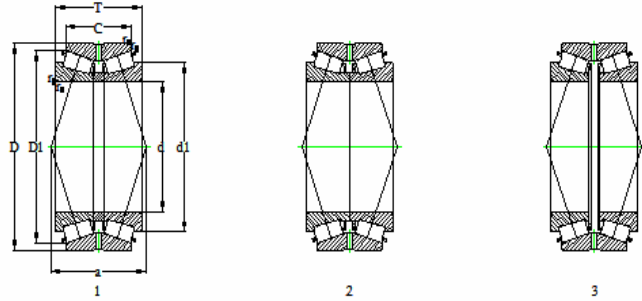
基本尺寸(mm) Boundary Dimensions						基本额定载荷(kN) Basic Load Ratings		轴承代号 Bearing Numbers	结构 Design	相关安装尺寸 Abutment and Fillet Dimensions				计算系数 Calculation Factors				质量(kg) Mass (参考) Refer.
d	D	T	C	r _{1.2min}	r _{3.4min}	Cr	Cor			d _{a min}	D _{a max}	r _{b max}	r _{a max}	e	Y ₁	Y ₂	Y ₀	
279.4	374.65	104.775	79.375	1.6	6.4	810	2020	L555233/L555210D	1	300	362	1.6	6.4	0.4	1.68	2.5	1.64	28.5
	469.9	200.025	149.225	1.6	9.7	2030	4150	EE722110/722186D	1	336	451	1.6	9.7	0.38	1.8	2.7	1.7	127
	488.95	254	196.85	1	1.3	2950	5700	EE295110/295192D	1	329	469	1	1.3	0.31	2.2	3.2	2.1	177
279.982	380.898	139.7	107.95	1.6	3.6	1140	2820	LM654642/LM654610D	1	293.2	370.2	1.6	3.6	0.43	1.57	2.34	1.53	42.7
280	406.4	149.225	117.475	1.6	6.4	1290	2870	EE128114/128160D	1	315	391	1.6	6.4	0.39	1.8	2.6	1.7	56.9
280.192	406.4	120.65	85.725	1.6	6.8	890	1740	EE101103/101601D	1	315	391	1.6	6.8	0.41	1.7	2.5	1.6	42.5
	406.4	149.225	117.475	1.6	6.8	1290	2870	EE128111/128160D	1	316	391	1.6	6.8	0.39	1.8	2.6	1.7	56.8
285.75	358.775	76.2	53.975	1.6	3.6	430	1150	545112/545142D	1	307	348	1.6	3.6	0.49	1.4	2	1.3	15.8
	380.898	139.7	107.95	1.6	3.6	1168	3040	LM654649/LM654610D	1	316	371	1.6	3.6	0.43	1.6	2.3	1.6	42
	469.9	177.785	127	1.6	9.7	1890	3600	EE921124/921851D	1	338	450	1.6	9.7	0.29	2.3	3.4	2.3	105
288.925	476.25	177.785	127	1.6	9.7	1960	3460	EE921124/921876D	1	310.8	439.8	1.6	9.7	0.29	2.31	3.44	2.26	111
	501.65	203.2	120.65	3.2	6.4	2160	4100	EE147112/147198D	1	350	483	3.2	6.4	0.83	0.81	1.2	0.79	151
288.925	406.4	165.1	130.175	1.6	6.4	1843	4270	M255449/M255410DC	1	324	395	1.6	6.4	0.33	2	3	2	63
	406.4	165.1	130.175	1.6	9.5	1720	4420	M255448/M255410D	1	313.9	387.5	1.6	9.5	0.34	2	2.97	1.95	64.6
292.1	374.65	104.775	79.375	1.6	6.4	810	2020	L555249/L555210D	1	309	362	1.6	6.4	0.4	1.68	2.5	1.64	25.2
	469.9	200.025	149.225	1.6	9.5	2100	4370	EE722115/722186D	1	317.1	430.1	1.6	9.5	0.38	1.79	2.67	1.75	118
	520.7	228.6	165.1	1.6	6.4	2660	4900	EE224115/224205D	1	345	492	1.6	6.4	0.33	2.1	3.1	2	180
298.45	558.8	298.45	222.25	1.6	6.4	4250	8200	EE790114/790223D	1	362	537	1.6	6.4	0.39	1.7	2.5	1.7	312
	558.8	298.45	222.25	1.6	19.8	4040	8000	EE790116/790223D	1	337.7	515	1.6	19.8	0.4	1.71	2.54	1.67	306
298.45	444.5	146.05	98.425	1.6	8	1170	2280	EE291175/291751D	1	339	427	1.6	8	0.38	1.8	2.7	1.7	63.9
299.974	495.3	301.625	247.65	1.6	8	4200	9800	HH258248/HH258210D	1	342	467	1.6	8	0.33	2.03	3.02	1.98	205
300.038	422.275	174.625	136.525	1.6	6.4	1950	4520	HM256849/HM256810D	1	337	411	1.6	6.4	0.33	2	3	2	71.5
300.787	438.048	161.925	123.825	1.6	6.4	1510	3450	329115/329173D	1	320.6	411.6	1.6	6.4	0.33	2.04	3.04	2	74.4

双内圈双列圆锥滚子轴承(英制系列) (Inch Double-Row Tapered Roller Bearings)



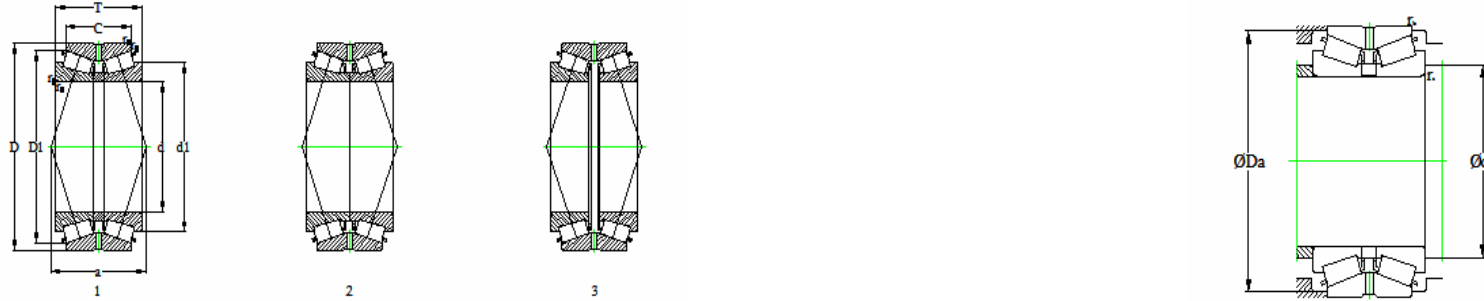
基本尺寸(mm) Boundary Dimensions						基本额定载荷(kN) Basic Load Ratings		轴承代号 Bearing Numbers	结构 Design	相关安装尺寸 Abutment and Fillet Dimensions				计算系数 Calculation Factors				质量(kg) Mass (参考) Refer.
d	D	T	C	r _{1.2min}	r _{3.4min}	Cr	Cor			d _{a min}	D _{a max}	r _{b max}	r _{a max}	e	Y ₁	Y ₂	Y ₀	
304.8	393.7	107.95	82.55	1.6	6.4	910	2280	L357049/L357010D	1	334	385	1.6	6.4	0.36	1.9	2.8	1.8	30
	393.7	107.95	82.55	1.6	6.4	910	2280	L357049NW/L357010D	2	335	385	1.6	6.4	0.36	1.9	2.8	1.8	30.2
	412.75	123.825	92.075	1.6	6.4	1090	2520	EE109120/109163D	1	337	401	1.6	6.4	0.43	1.6	2.4	1.6	42.1
438.048	438.048	161.925	123.825	1.6	6.4	1510	3450	329120/329173D	1	324.6	411.6	1.6	6.4	0.33	2.04	3.04	2	72
	438.048	165.1	120.65	1.6	6.4	1380	3200	EE129120X/129120D	1	334	411	1.6	6.4	0.42	1.62	2.42	1.59	71.4
	444.5	139.7	98.425	1.6	6.4	1240	2760	291201/291751D	1	324.6	413.5	1.6	6.4	0.38	1.79	2.66	1.75	64.5
444.5	444.5	146.05	98.425	1.6	8	1170	2280	EE291201/291751D	1	342	427	1.6	8	0.38	1.8	2.7	1.7	60.5
	495.3	162.245	120.65	1.6	6.4	1750	3220	EE941205/941951XD	1	324.6	455.7	1.6	6.4	0.4	1.68	2.5	1.64	107
	495.3	168.595	127	1.6	6.4	1840	3550	EE941205/941953D	1	352	471	1.6	6.4	0.4	1.7	2.5	1.7	111
304.8	495.3	195.85	146.05	1.6	16	2180	4680	EE724119/724196D	1	343.8	457.4	1.6	16	0.4	1.68	2.5	1.64	135
	495.3	196.85	146.05	1.6	16	2130	4300	EE724120/724196D	1	364	474	1.6	16	0.4	1.7	2.5	1.6	130
	558.8	298.45	222.25	1.2	1.6	4250	8200	EE790120/790223D	1	364	537	1.2	1.6	0.39	1.7	2.5	1.7	298
311.15	558.8	190.5	111.125	3.2	9.7	2140	4250	EE148122/148221D	1	377	521	3.2	9.7	0.88	0.77	1.1	0.75	173
317.5	444.5	146.05	98.425	1.6	8	1170	2280	EE291250/291751D	1	349	427	1.6	8	0.38	1.8	2.7	1.7	53.4
	447.675	180.975	146.05	1.6	3.6	2210	5130	HM259049/HM259010D	1	353	435	1.6	3.6	0.33	2	3	2	84
	622.3	304.8	174.625	3.2	14.3	3900	7550	H961649/H961610D	1	414	597	3.2	14.3	0.94	0.72	1.1	0.7	386
329.87	533.4	165.1	114.3	1.6	4.7	1810	3600	EE971298/972102D	1	383	510	1.6	4.7	0.33	2	3	2	125
	533.4	174.635	123.825	1.6	4.7	1810	3600	EE971298/972103D	1	383	510	1.6	4.7	0.33	2	3	2	130
	546.1	177.8	152.4	3.2	4.7	1810	3600	EE971298/972151D	1	383	517	3.2	4.7	0.33	2	3	2	151
330.2	482.6	133.35	88.9	1.6	7	1210	2840	EE161300/161901	1	377	465	1.6	7	0.5	1.4	2	1.3	73.6
	482.6	133.35	88.9	1.6	7	1050	2500	EE161300/161901D	1	351.4	453.4	1.6	7	0.5	1.35	2.01	1.32	74.8
	482.6	177.8	127	1.6	3.2	2130	4750	EE526130/526191D	1	370	465	1.6	3.2	0.4	1.7	2.5	1.6	100
333.375	469.9	190.5	152.4	1.6	6.4	2340	5400	HM261049/HM261010D	1	375	457	1.6	6.4	0.33	2	3	2	98
342.9	457.098	142.875	101.6	1.6	3.2	1170	3050	LM961548/LM961511D	1	378	444	1.6	3.2	0.71	0.95	1.4	0.93	59.4
	533.4	165	114.3	1.6	4.7	1810	3600	EE971354/972102D	1	390	510	1.6	4.7	0.33	2	3	2	116
	533.4	174.63	123.825	1.6	4.8	2261	4180	EE971354/972103D	1	390	510	1.6	4.8	0.33	2	3	2	130
	546.1	177.8	152.4	3.2	4.7	1810	3600	EE971354/972151D	1	390	517	3.2	4.7	0.33	2	3	2	141

双内圈双列圆锥滚子轴承(英制系列) (Inch Double-Row Tapered Roller Bearings)



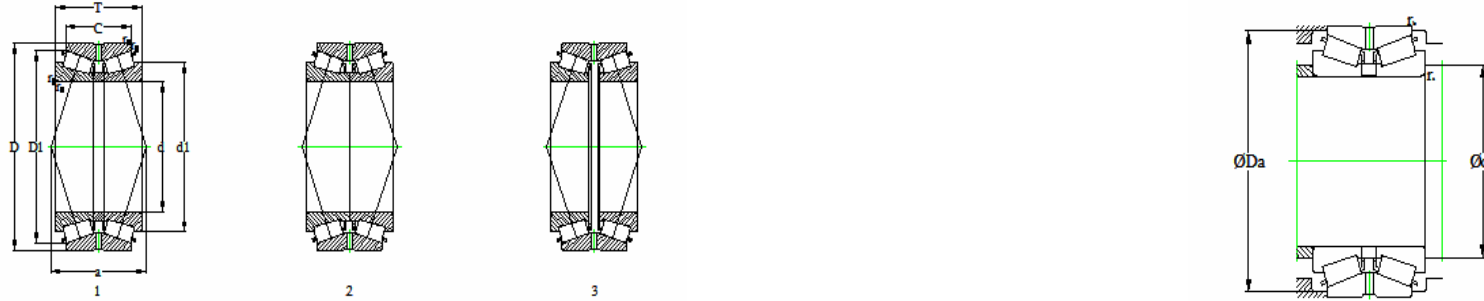
基本尺寸(mm) Boundary Dimensions						基本额定载荷(kN) Basic Load Ratings		轴承代号 Bearing Numbers	结构 Design	相关安装尺寸 Abutment and Fillet Dimensions				计算系数 Calculation Factors				质量(kg) Mass (参考) Refer.
d	D	T	C	r _{1,2min}	r _{3,4min}	Cr	Cor			d _{a min}	D _{a max}	r _{b max}	r _{a max}	e	Y ₁	Y ₂	Y ₀	
346.075	482.6	133.35	88.9	1.6	7	1210	2840	EE161363/161901D HM262749/HM262710D	1	385	465	1.6	7	0.5	1.4	2	1.3	64.8 110
	488.95	200.025	158.75	1.6	6.4	2500	5980			386	475	1.6	6.4	0.33	2	3	2	
349.25	514.35	193.675	152.4	1.6	6.4	2270	5450	EE333137/333203D	1	394	495	1.6	6.4	0.37	1.8	2.7	1.8	130
354.013	482.6	133.35	88.9	1.6	7	1050	2500	EE161394/161901D	1	375.2	453.4	1.6	7	0.5	1.35	2.01	1.32	61.6
355.6	444.5	136.525	111.125	1.6	3.6	1180	3460	L163149/L163110D	1	381	435	1.6	3.6	0.31	2.2	3.3	2.2	46
	482.6	133.35	88.9	1.6	7	1210	2840	EE161400/161901D	1	390	465	1.6	7	0.5	1.4	2	1.3	59.3
	501.65	155.575	107.95	1.6	6.4	1740	4040	EE231400/231976D	1	403	489	1.6	6.4	0.44	1.5	2.3	1.4	87
	514.35	193.675	152.4	1.6	6.4	2270	5450	EE333140/333203D	1	397	495	1.6	6.4	0.37	1.8	2.7	1.8	125
368.249	523.875	214.312	169.862	1.6	6.4	2980	7130	HM265049/HM265010D	1	400	499	1.6	6.4	0.33	2	3	2	140
368.3	596.9	203.2	133.35	2.3	9.7	2930	5560	EE181453/182351D	1	428	570	2.3	9.7	0.41	1.7	2.5	1.6	188
371.475	501.65	155.575	107.95	1.6	6.4	1740	4040	231462/231976DC	1	411	489	1.6	6.4	0.44	1.5	2.3	1.4	76.5
	514.35	155.575	107.95	1.6	6.4	1360	3300	EE231462/232026D	1	411	495	1.6	6.4	0.44	1.5	2.3	1.5	83.8
377.825	508	139.7	88.9	1.6	6.4	1180	2980	EE192148/192201D	1	397.6	479.7	1.6	6.4	0.53	1.27	1.89	1.24	68.8
381	508	139.7	88.9	1.6	6.4	1180	2980	EE192150/192201D	1	400.8	479.7	1.6	6.4	0.53	1.27	1.89	1.24	66.7
	546.1	222.25	177.8	1.6	6.4	3150	8000	HM266447/HM266410D	1	428	531	1.6	6.4	0.33	2	3	2	162
	590.55	244.475	193.675	1.6	6.4	3100	8350	HM268730/HM268710D	1	425	561	1.6	6.4	0.33	2.03	3.02	1.98	218
384.175	441.325	68.262	52.388	1.6	6.4	360	1060	LL365340/LL365310D	1	399	433	1.6	6.4	0.34	1.99	2.96	1.94	14.1
	546.1	222.25	177.8	1.6	6.4	3030	6980	HM266449/HM266410D	1	429	531	1.6	6.4	0.33	2	3	2	161
385.762	514.35	177.8	139.7	1.6	6.4	2120	5550	LM665949/LM665910D	1	415	495	1.6	6.4	0.42	1.61	2.4	1.58	90
393.7	539.75	142.875	101.6	1.6	6.4	1400	3300	EE234154/234213D	1	438	526	1.6	6.4	0.48	1.4	2.1	1.4	84.7
	546.1	158.75	117.475	1.6	6.4	1400	3300	EE234154/234216D	1	438	529	1.6	6.4	0.48	1.4	2.1	1.4	97
	558.8	146.05	104.775	1.6	6.4	1490	3810	EE234154/234221D	1	413.5	515	1.6	6.4	0.48	1.42	2.11	1.39	104
	560.248	146.05	104.78	1.6	6.4	1400	3300	EE234154/234223D	1	438	536	1.6	6.4	0.48	1.4	2.1	1.4	100
396.875	539.75	142.875	101.6	1.6	6.4	1400	3300	EE234156/234213D	1	439	526	1.6	6.4	0.48	1.4	2.1	1.4	82.5

双内圈双列圆锥滚子轴承(英制系列) (Inch Double-Row Tapered Roller Bearings)



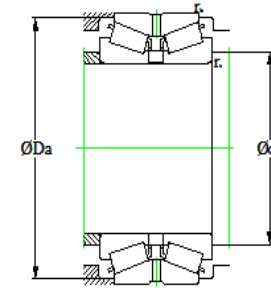
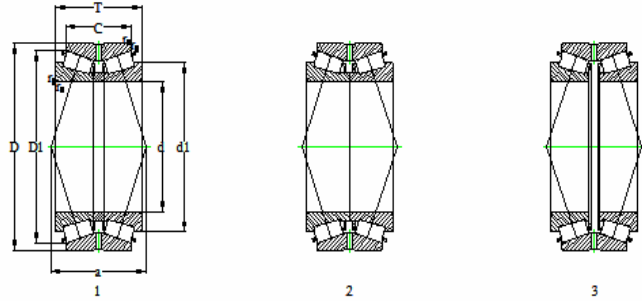
基本尺寸(mm) Boundary Dimensions						基本额定载荷(kN) Basic Load Ratings		轴承代号 Bearing Numbers	结构 Design	相关安装尺寸 Abutment and Fillet Dimensions				计算系数 Calculation Factors				质量(kg) Mass (参考) Refer.
d	D	T	C	r _{1.2min}	r _{3.4min}	Cr	Cor			d _{a min}	D _{a max}	r _{b max}	r _{a max}	e	Y ₁	Y ₂	Y ₀	
396.875	546.1	158.75	117.475	1.6	6.4	1400	3300	EE234156/234216D	1	439	529	1.6	6.4	0.48	1.4	2.1	1.4	94.6
	558.8	146.05	104.775	1.6	6.4	1490	3810	EE234156/234221D	1	416.7	515	1.6	6.4	0.48	1.42	2.11	1.39	102
406.4	539.75	142.875	101.6	1.6	6.4	1600	4180	EE234160/234213D	1	444	526	1.6	6.4	0.48	1.4	2.1	1.4	82.6
	546.1	158.75	117.475	1.6	6.4	1400	3300	EE234160/234216D	1	444	529	1.6	6.4	0.48	1.4	2.1	1.4	94.2
	546.1	185.738	144.462	1.6	6.4	2270	5950	M667944/M667910D	1	449	536	1.6	6.4	0.42	1.6	2.4	1.6	113
	546.1	185.738	147.638	1.6	6.4	2270	5950	M667944/M667911D	1	449	537	1.6	6.4	0.42	1.6	2.4	1.6	114
	558.8	146.05	104.775	1.6	6.4	1490	3810	EE234160/234221D	1	427.2	515	1.6	6.4	0.48	1.42	2.11	1.39	95
	574.675	157.162	106.362	1.6	6.8	1580	3700	EE285160/285228D	1	453	552	1.6	6.8	0.5	1.4	2	1.3	111
	590.55	228.6	174.625	1.6	9.5	3060	7070	EE833160X/833233D	1	433.4	560	1.6	9.5	0.32	2.08	3.1	2.04	188
	609.524	177.8	133.35	1.6	8	2590	5600	EE736160/736239D	1	459	585	1.6	8	0.35	1.9	2.9	1.9	163
	609.6	187.325	123.825	1.6	6.8	2520	5500	EE911600/912401D	1	459	586	1.6	6.8	0.38	1.8	2.6	1.7	172
	673.1	192.639	127	1.6	6.4	3000	6200	EE571602/572651D	1	479	646	1.6	6.4	0.4	1.7	2.5	1.7	251
673.1	192.639	152.4	1.6	6.4	2530	5240	EE571602/572653D	1	427.2	630	1.6	6.4	0.4	1.68	2.5	1.64	242	
409.575	546.1	185.738	147.638	1.6	6.4	2280	5740	M667948/M667911D	1	430.4	530	1.6	6.4	0.42	1.62	2.42	1.59	110
	574.675	157.162	106.362	1.6	6.8	1580	3700	EE285162/285228D	1	455	552	1.6	6.8	0.5	1.4	2	1.3	109
411.162	609.6	187.325	123.825	1.6	6.8	2520	5500	EE911618/912401D	1	461	586	1.6	6.8	0.38	1.8	2.6	1.7	167
415.925	590.55	244.475	193.675	1.6	6.4	3710	9170	M268749/M268710DC	1	465	576	1.6	6.4	0.33	2	3	2	205
425.45	685.698	311.15	234.95	3.2	12.7	5200	11400	EE328167/328268D	1	497	661	3.2	12.7	0.4	1.7	2.5	1.7	410
430.213	603.25	153.289	98.425	1.6	6.4	1680	3770	EE241693/242376D	1	451	565	1.6	6.4	0.53	1.28	1.91	1.26	109
	603.25	159.639	104.775	1.6	6.4	1680	3770	EE241693/242377D	1	451	565	1.6	6.4	0.53	1.28	1.91	1.26	113
431.8	571.5	155.575	111.125	1.6	3.2	1880	4850	LM869448/LM869410D	1	471	560	1.6	3.2	0.54	1.25	1.8	1.3	100
	603.25	153.289	98.425	1.6	6.4	1680	3770	EE241701/242376D	1	452.6	565	1.6	6.4	0.53	1.28	1.91	1.26	107
	603.25	159.639	104.775	1.6	6.4	1670	4100	EE241701/242377D	1	446	561	1.6	6.4	0.53	1.28	1.91	1.25	124
	673.1	192.639	127	1.6	6.4	3000	6200	EE571703/572651D	1	491	646	1.6	6.4	0.4	1.7	2.5	1.7	225
	673.1	192.639	152.4	1.6	6.4	3000	6200	EE571703/572653D	1	491	649	1.6	6.4	0.4	1.7	2.5	1.7	235

双内圈双列圆锥滚子轴承(英制系列) (Inch Double-Row Tapered Roller Bearings)



基本尺寸(mm) Boundary Dimensions						基本额定载荷(kN) Basic Load Ratings		轴承代号 Bearing Numbers	结构 Design	相关安装尺寸 Abutment and Fillet Dimensions				计算系数 Calculation Factors				质量(kg) Mass (参考) Refer.
d	D	T	C	r _{1.2min}	r _{3.4min}	Cr	Cor			d _{a min}	D _{a max}	r _{b max}	r _{a max}	e	Y ₁	Y ₂	Y ₀	
441.325	660.4	195.262	138.112	1.6	10.4	2650	5550	EE737173/737261D	1	499	636	1.6	10.4	0.37	1.8	2.7	1.8	198
447.675	635	257.175	206.375	1.6	6.4	4180	10450	M270749/M270710D	1	502	617	1.6	6.4	0.33	2	3	2	245
	649.924	257.175	206.375	1.6	6.4	3930	10500	M270749/M270720D	1	468.5	605	1.6	6.4	0.33	2.03	3.02	1.98	272
457.2	596.9	165.1	120.65	1.6	9.7	2050	5220	EE244180/244236D	1	500	581	1.6	9.7	0.4	1.7	2.5	1.6	110
	660.4	195.262	138.112	1.6	10.4	2650	5550	EE737181/737261D	1	507	636	1.6	10.4	0.37	1.8	2.7	1.8	182
	730.148	254	177.8	1.6	9.7	3900	8350	EE671801/672875D	1	527	699	1.6	9.7	0.39	1.7	2.6	1.7	368
479.425	679.45	276.225	222.25	1.6	6.4	4760	12060	M272749/M272710D	1	535	663	1.6	6.4	0.33	2	3	2	302
482.6	615.95	184.15	146.05	1.6	6.4	2380	6900	LM272249/LM272210D	1	522	604	1.6	6.4	0.37	1.8	2.7	1.8	126
	634.873	177.8	142.875	1.6	6.4	2290	6600	EE243190/243251D	1	530	622	1.6	6.4	0.34	2	2.9	1.9	144
488.671	660.4	206.375	158.75	1.6	6.4	2920	7550	EE640191/640261D	1	535	643	1.6	6.4	0.31	2.2	3.3	2.1	185
	666.674	206.375	158.75	1.6	6.4	3100	7910	EE640191/640262D	1	510	630	1.6	6.4	0.31	2.2	3.27	2.15	194
488.95	634.873	180.975	136.525	1.6	6.4	2350	6350	LM772748/LM772710D	1	532	623	1.6	6.4	0.47	1.4	2.1	1.4	134
488.95	660.4	206.375	158.75	1.6	6.4	2920	7550	EE640192/640261D	1	535	643	1.6	6.4	0.31	2.2	3.3	2.1	185
	666.674	206.375	158.75	1.6	6.4	3100	7910	EE640192/243251D	1	510	630	1.6	6.4	0.31	2.2	3.27	2.15	194
489.026	634.873	177.8	142.875	1.6	6.4	2610	6980	EE243192/243251D	1	533	622	1.6	6.4	0.35	1.9	2.9	1.8	130
498.475	634.873	177.8	142.875	1.6	6.4	2610	6980	EE243196/243251D	1	538	622	1.6	6.4	0.35	1.9	2.9	1.8	125
501.65	711.2	292.1	231.775	1.6	6.4	4810	12800	M274149/M274110D	1	525	680	1.6	6.4	0.33	2.03	3.02	1.98	346
505.968	736.6	186.502	114.3	1.6	6.4	2780	6800	EE981992/982901	1	571	712	1.6	6.4	0.48	1.4	2.1	1.4	242
508	736.6	186.502	114.3	1.6	6.4	2780	6800	EE982003/982901	1	572	712	1.6	6.4	0.48	1.4	2.1	1.4	240
	838.2	304.8	222.25	3.2	9.7	6200	14100	EE426200/426331D	1	595	804	3.2	9.7	0.48	1.4	2.1	1.4	630
514.35	736.6	186.502	114.3	1.6	6.4	2520	5150	EE982028/982901D	1	540	690	1.6	6.4	0.48	1.42	2.11	1.39	213
520.7	736.6	186.502	114.3	1.6	6.4	2880	6370	EE982051/982901D	1	579	712	1.6	6.4	0.48	1.4	2.1	1.4	210

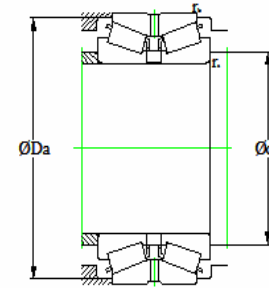
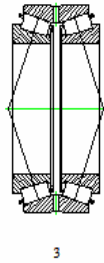
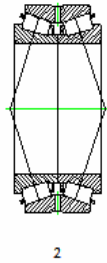
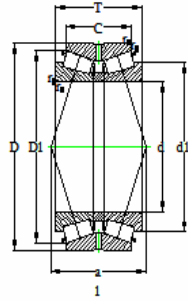
双内圈双列圆锥滚子轴承(英制系列) (Inch Double-Row Tapered Roller Bearings)



基本尺寸(mm) Boundary Dimensions						基本额定载荷(kN) Basic Load Ratings		轴承代号 Bearing Numbers	结构 Design	相关安装尺寸 Abutment and Fillet Dimensions				计算系数 Calculation Factors				质量(kg) Mass (参考) Refer.
d	D	T	C	r _{1.2min}	r _{3.4min}	Cr	Cor			d _{a min}	D _{a max}	r _{b max}	r _{a max}	e	Y ₁	Y ₂	Y ₀	
533.4	784.225	190.5	120.65	1.6	6.4	3000	7000	EE522102/523088D EE626210/626321D	1	596	752	1.6	6.4	0.48	1.4	2.1	1.4	276
	812.8	269.875	187.325	3.2	9.7	4950	11300			607	783	3.2	9.7	0.44	1.5	2.3	1.5	465
534.988	622.3	111.125	82.55	1.6	3.6	1000	3080	LL475048/LL475011D	1	555	610	1.6	3.6	0.37	1.83	2.73	1.79	47.1
536.575	761.873	311.15	247.65	1.6	6.4	5960	15200	M276449 /M276410DG2	1	576	726	1.6	6.4	0.33	2	3	2	430
546.1	736.6	165.1	114.3	3.2	6.4	2190	5200	EE542215/542291D	1	598	715	3.2	6.4	0.51	1.3	2	1.3	168
549.275	692.15	174.625	136.525	3.2	6.4	2320	6950	L476549/L476510D	1	579	666	3.2	6.4	0.38	1.79	2.67	1.75	135
558.8	736.6	165.1	114.3	3.2	6.4	2050	5400	EE542220/542291D	1	594	705	3.2	6.4	0.51	1.32	1.96	1.29	166
558.8	736.6	187.328	138.112	1.6	6.4	3240	7880	EE843220/843291D LM377449/LM377410DC	1	591	708	1.6	6.4	0.35	1.9	2.9	1.8	190
	736.6	225.425	177.8	1.6	6.4	4080	11020		1	591	708	1.6	6.4	0.35	1.9	2.9	1.8	150
565.15	742.95	187.328	138.113	1.6	6.4	2960	8050	EE843220/843292D	1	580	710	1.6	6.4	0.34	1.97	2.93	1.93	206
	863.6	317.5	228.6	3.2	8	6550	15200		1	638	832	3.2	8	0.34	2	2.9	1.9	613
571.5	812.8	333.375	263.525	1.6	6.4	6120	15200	M278749 /M278710DAG2	1	615	774	1.6	6.4	0.33	2	3	2	520
588.8	736.6	165.1	114.3	3.2	6.4	2190	5200	EE542220/542291D	1	604	715	3.2	6.4	0.51	1.3	2	1.3	154
	736.6	187.328	138.112	1.6	6.4	3000	7800	EE843220/843291D	1	606	718	1.6	6.4	0.34	2	2.9	1.9	195
	736.6	225.425	177.8	1.6	6.4	3950	11200	LM377449/LM377410D	1	607	720	1.6	6.4	0.35	1.9	2.9	1.9	247
602.945	742.95	187.328	138.112	1.6	6.4	3000	7800	EE843220/843292D	1	606	721	1.6	6.4	0.34	2	2.9	1.9	203
	787.4	206.375	158.75	1.6	6.4	3820	10070		1	655	771	1.6	6.4	0.37	1.8	2.7	1.8	240
607.72	793.75	206.375	158.75	1.6	6.4	3450	9600	649237/649311D EE649237/649313D	1	655	774	1.6	6.4	0.37	1.8	2.7	1.8	253
	787.4	206.375	158.75	1.6	6.4	3450	9600	EE649239/649311D	1	658	771	1.6	6.4	0.37	1.8	2.7	1.8	237
609.6	793.75	206.375	158.75	1.6	6.4	3390	9940	EE649239/649313D	1	630	755	1.6	6.4	0.37	1.82	2.7	1.78	254
	717.55	127	95.25	1.6	6.4	1530	4600	LL579749/LL579710D EE649240/649311D	1	642	708	1.6	6.4	0.4	1.7	2.5	1.6	81.7
787.4	206.375	158.75	1.6	6.4	3820	10070	1		659	771	1.6	6.4	0.37	1.8	2.7	1.8	232	

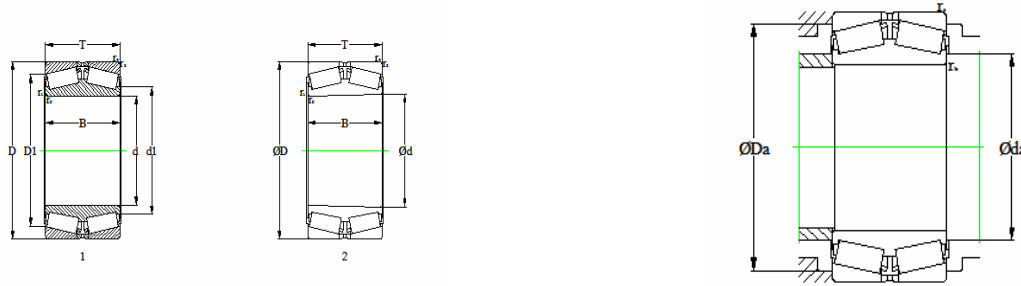
双内圈双列圆锥滚子轴承(英制系列) (Inch Double-Row Tapered Roller Bearings)

WRT



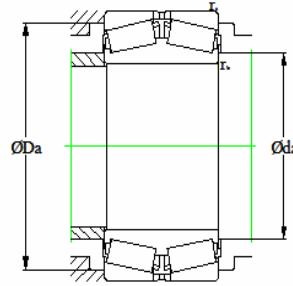
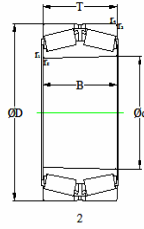
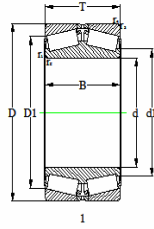
基本尺寸(mm) Boundary Dimensions						基本额定载荷(kN) Basic Load Ratings		轴承代号 Bearing Numbers	结构 Design	相关安装尺寸 Abutment and Fillet Dimensions				计算系数 Calculation Factors				质量(kg) Mass (参考) Refer.
d	D	T	C	r _{1,2min}	r _{3,4min}	Cr	Cor			d _{a min}	D _{a max}	r _{b max}	r _{a max}	e	Y ₁	Y ₂	Y ₀	
609.6	793.75	206.375	158.75	1.6	6.4	3450	9600	EE649240/649313D EE743240/743321D	1	659	774	1.6	6.4	0.37	1.8	2.7	1.8	243
	812.8	190.5	146.05	3.2	6.4	3400	8360			664	785	3.2	6.4	0.33	2	3	2	250
660.4	812.8	203.2	158.75	3.2	6.4	3250	10300	L281148/L281110DA EE749260/749335D	1	693	789	3.2	6.4	0.37	1.8	2.69	1.76	199
	854.924	186.329	135.9	2.4	9.5	3120	8010			690	820	2.4	9.5	0.35	1.92	2.86	1.88	238
673.1	793.75	133.35	98.426	1.6	6.4	1750	5850	673KBE7951	1	710	781	1.6	6.4	0.36	1.9	2.8	1.8	108
685.8	876.3	200.025	152.4	1.6	6.4	3510	10800	EE655270/655346D	1	710	850	1.6	6.4	0.42	1.62	2.42	1.59	280
711.2	914.4	190.5	139.7	1.6	6.4	3610	9170	EE755280/755361D	1	767	891	1.6	6.4	0.37	1.8	2.7	1.8	265
723.9	914.4	187.325	139.7	1.6	3.2	3020	8930	EE755285/75361D	1	745	880	1.6	3.2	0.38	1.78	2.65	1.74	266
749.3	965.2	187.325	133.35	1.6	6.4	3130	9590	EE752295/752381D	1	775	920	1.6	6.4	0.4	1.68	2.5	1.64	320
749.3	990.6	338	265	3.2	6.4	7850	23900	LM283649/LM283610D	1	775	960	3.2	6.4	0.32	2.12	3.15	2.07	681
762	965.2	187.325	133.35	1.6	6.4	3580	9800	EE752300/752381D	1	815	943	1.6	6.4	0.4	1.7	2.5	1.6	290
774.7	965.2	187.325	133.35	1.6	6.4	3580	9800	EE752305/752381D	1	822	943	1.6	6.4	0.4	1.7	2.5	1.6	265
812.8	1016	190.5	146.05	3.2	6.4	3580	10200	EE762320/762401D EE762320/762420XD	1	876	994	3.2	6.4	0.43	1.6	2.3	1.6	350
	1066.8	190.5	146.05	3.2	6.4	3580	10200			867	1019	3.2	6.4	0.43	1.6	2.3	1.6	445
914.4	1066.8	139.7	101.6	3.2	6.4	2460	8000	LL686947/LL686910D	1	955	1048	3.2	6.4	0.4	1.7	2.5	1.6	190
939.8	1270	547.2	317.5	3.2	12.7	9200	27550	940KBE1270-1	1	976	1250	3.2	12.7	0.88	0.77	1.15	0.8	1540
977.9	1130.3	139.7	101.6	3.2	6.4	2510	8750	LL687949/LL687910D	1	1019	1112	3.2	6.4	0.43	1.6	2.3	1.5	210
1270	1435.1	146.05	101.6	3.2	6.4	2800	11100	LL889049/LL889010D	1	1315	1413	3.2	6.4	0.57	1.2	1.8	1.2	303
1431.925	1584.325	130.175	79.375	3.2	6.4	2440	8850	LL989349/LL989310D	1	1460	1560	3.2	6.4	0.62	1.09	1.62	1.06	259
1562.1	1086.575	279.4	196.85	3.2	9.7	7210	28000	EE299615/299711D	1	1632	1777	3.2	9.7	0.48	1.4	2.1	1.4	1045

双外圈双列圆锥滚子轴承(英制系列) (Inch Double-Row Tapered Roller Bearings)



基本尺寸(mm) Boundary Dimensions				轴承型号 Bearing Numbers	结构 Design	相关安装尺寸(mm) Abutment and Fillet Dimensions				计算系数 Calculation Factors				质量(mm) Mass 参考 Refer.
d	D	T	B			$d_{a\ min}$	$D_{b\ max}$	$r_{b\ max}$	$r_{a\ max}$	e	Y_1	Y_2	Y_0	
101.6	190.5	127	117.475	868D/854	1	113	168	1.6	3.2	0.33	2	3	2	14.5
	200.025	127	127	868D/854X	1	113	172	1.6	3.2	0.33	2	3	2	18.2
107.95	190.5	101.6	98.425	71426D/71750	1	121	171	1.6	3.2	0.42	1.6	2.4	1.6	11.8
	212.725	152.4	142.885	946D/932	1	123	187	3.2	3.2	0.33	2.1	3.1	2	23.9
114.3	190.5	101.6	98.425	71450D/71750	1	125	171	1.6	3.2	0.42	1.6	2.4	1.6	11
	212.725	152.4	142.885	HH224346D/HH224310	1	127	191	3.2	3.2	0.33	2.1	3.1	2	21.9
120.65	234.95	152.4	139.7	95474D/95925	1	146	212	6.4	3.2	0.37	1.8	2.7	1.8	28.1
127	182.562	76.2	76.2	48290D/48220	1	136	167	3.2	1.6	0.31	2.2	3.3	2.2	6.7
	182.562	76.2	76.2	48290TD/48220	2	136	167	1.6	1.6	0.31	2.2	3.3	2.2	6.7
	196.85	92.075	92.075	67388D/67322	1	145.8	180.1	3.2	1.6	0.34	1.96	2.92	1.92	10.4
203.2	92.075	92.075	67388D/67320	1	145.8	180.1	3.2	1.6	0.34	1.96	2.92	1.92	11.8	
	234.95	152.4	139.7	95499D/95925	1	147	212	5	3.3	0.37	1.8	2.7	1.8	26.7
	247	171.45	161.925	EE153053D/153097	1	153.2	217.4	3.2	3.2	0.32	2.1	3.13	2.05	35.9
247.65	152.4	139.7	95499D/95975	1	150.6	204.3	3.2	5.2	0.37	1.83	2.72	1.79	32.4	
	254	171.45	161.925	EE153053D/153100	1	146	223	3.2	6.4	0.32	2.1	3.1	2.1	36.5
	258.763	171.45	161.925	EE153053D/153101	1	153.2	217.4	6.4	3.2	0.32	2.1	3.13	2.05	41.6
260.35	171.45	161.925	EE153053D/153102	1	153.2	217.4	6.4	3.2	0.32	2.1	3.13	2.05	42.5	
	288.925	158.75	149.225	HH231637D/HH231610	1	172.1	252.1	6.4	13.2	0.32	2.12	3.15	2.07	50.9
	295.275	158.75	149.225	HH231637D/HH231615	1	172.1	252.1	6.4	13.2	0.32	2.12	3.15	2.07	54.3
130.005	215.9	123.825	123.825	74510D/74850	1	145	195	3.2	1.6	0.49	1.4	2.1	1.4	17.2
	217.488	123.825	123.825	74510D/74856	1	153.1	193.4	3.2	1.6	0.49	1.38	2.06	1.35	17.8
130.175	215.9	101.6	101.6	74512D/74850	1	145	195	1.6	3.2	0.49	1.4	2.1	1.4	14.7
	217.488	101.6	101.6	74512D/74856	1	153.1	193.4	3.2	1.6	0.49	1.38	2.06	1.35	15
	222.25	53.975	60.579	73512D/73875	1	160.8	197.9	3.2	3.6	0.44	1.54	2.3	1.51	9.38
133.35	196.85	92.075	92.075	67390D/67322	1	142	180	1.6	3.2	0.34	2	2.9	1.9	9.3
	196.85	92.075	92.075	67390TD/67322	2	145.8	180.1	3.2	1.6	0.34	1.96	2.92	1.92	9.46
	196.85	120.65	120.65	67392TD/67322	2	145.8	180.1	3.2	1.6	0.34	1.96	2.92	1.92	11.6

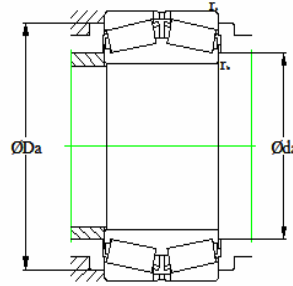
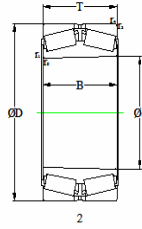
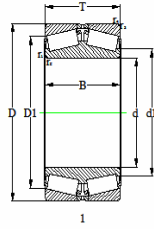
双外圈双列圆锥滚子轴承(英制系列) (Inch Double-Row Tapered Roller Bearings)



基本尺寸(mm) Boundary Dimensions				轴承型号 Bearing Numbers	结构 Design	相关安装尺寸(mm) Abutment and Fillet Dimensions				计算系数 Calculation Factors				质量(mm) Mass 参考 Refer.
d	D	T	B			$d_{a\ min}$	$D_{b\ max}$	$r_{b\ max}$	$r_{a\ max}$	e	Y_1	Y_2	Y_0	
133.35	203.2	92.075	92.075	67390D/67320	1	145.8	180.1	3.2	1.6	0.34	1.96	2.92	1.92	10.9
	203.2	92.075	92.075	67390TD/67320	2	145.8	180.1	3.2	1.6	0.34	1.96	2.92	1.92	10.9
	203.2	120.65	120.65	67392TD/67320	2	145.8	180.1	3.2	1.6	0.34	1.96	2.92	1.92	13.5
	234.95	152.4	139.7	95526TD/95925	2	150.6	204.3	3.2	1.6	0.37	1.83	2.72	1.79	25.6
	247.65	152.4	139.7	95526TD/95975	2	150.6	204.3	3.2	1.6	0.37	1.83	2.72	1.79	30.9
136.525	190.5	77.788	77.788	48393D/48320	1	149.7	174.8	3.2	1.6	0.32	2.1	3.13	2.06	6.87
	203.2	77.788	77.788	48393D/48328	1	149.7	174.8	3.2	1.6	0.32	2.1	3.13	2.06	9.22
	215.9	123.825	123.825	74539TD/74850	2	153.1	193.4	3.2	1.6	0.49	1.38	2.06	1.35	15.9
	217.488	123.825	123.825	74539TD/74856	2	153.1	193.4	3.2	1.6	0.49	1.38	2.06	1.35	16.4
	225.425	120.65	120.65	H228649D/H228610	1	149	204	1.6	3.2	0.33	2	3	2	19
	225.425	120.65	120.65	H228649TD/H228610	2	155.8	201.5	3.2	1.6	0.33	2.03	3.02	1.98	19.4
139.7	200.025	75.408	77.788	48680D/48620	1	151	185	0.8	3.2	0.34	2	3	2	7.9
	222.25	53.975	60.579	73550D/73875	1	160.8	197.9	3.2	3.6	0.44	1.54	2.3	1.51	8.53
	295.275	171.45	165.1	EE455048D/455116	1	162	256	3.2	6.4	0.31	2.2	3.3	2.2	55.4
	307.975	171.45	161.925	HH234032D/HH234010	1	187.3	270.5	6.7	13.5	0.33	2.07	3.08	2.02	62.3
	317.5	171.45	161.925	HH234032D/HH234018	1	187.3	270.5	6.7	13.5	0.33	2.07	3.08	2.02	68.1
142.875	200.025	74.613	77.788	48685TD/48620	2	155.1	182.5	3.2	0.8	0.34	2.01	2.99	1.96	7.58
146.05	244.475	92.075	87.313	81576D/81962	1	174.2	218.8	3.2	1.6	0.35	1.93	2.88	1.89	16.3
	317.5	171.45	161.925	HH234040D/HH234018	1	180	279	13.5	6.8	0.33	2.1	3.1	2	62.7
147.638	236.538	133.334	132.351	82581TD/82931	2	165.7	211.2	3.2	1.6	0.44	1.53	2.27	1.49	21.7
	241.3	133.334	132.351	82581TD/82950	2	165.7	211.2	3.2	1.6	0.44	1.53	2.27	1.49	23.6
149.225	236.538	105.347	106.363	82587D/82931	1	160	213	1.5	3.2	0.44	1.5	2.3	1.5	17.5
	236.538	105.347	106.363	82587TD/82931	2	165.7	211.2	3.2	1.6	0.44	1.53	2.27	1.49	17.9
	241.3	105.347	106.363	82587D/82950	1	165.7	211.2	3.2	1.6	0.44	1.53	2.27	1.49	19.4
	241.3	105.347	106.363	82587TD/82950	2	165.7	211.2	3.2	1.6	0.44	1.53	2.27	1.49	19.4
	254	120.65	120.65	99587D/99100	1	171.1	223.5	3.2	1.6	0.41	1.66	2.47	1.62	26

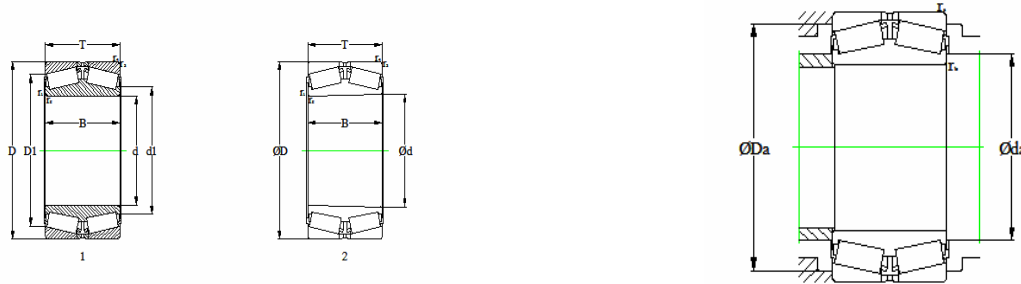
双外圈双列圆锥滚子轴承(英制系列) (Inch Double-Row Tapered Roller Bearings)

WRT



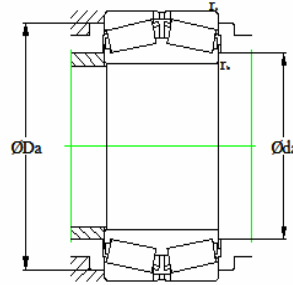
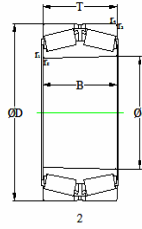
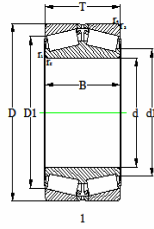
基本尺寸(mm) Boundary Dimensions				轴承型号 Bearing Numbers	结构 Design	相关安装尺寸(mm) Abutment and Fillet Dimensions				计算系数 Calculation Factors				质量(mm) Mass 参考 Refer.
d	D	T	B			$d_{a\ min}$	$D_{b\ max}$	$r_{b\ max}$	$r_{a\ max}$	e	Y_1	Y_2	Y_0	
152.4	222.25	84.138	84.138	M231649D/M231610	1	164	207	1.6	1.6	0.33	2	3	2	11.1
	222.25	84.138	84.138	M231649TD/M231610	2	167.9	201.5	1.6	1.6	0.33	2.03	3.02	1.98	11
	244.475	92.075	87.312	81601D/81962	1	167	225	1.6	3.2	0.35	1.9	2.9	1.9	15.3
	244.475	119.063	120.651	81604TD/81962	2	175.4	218.8	3.2	1.6	0.35	1.93	2.88	1.89	19.5
	254	120.65	120.65	99600TD/99100	2	171.1	223.5	3.2	1.6	0.41	1.66	2.47	1.62	25.3
	254	133.35	133.35	99600D/99100	1	171.1	223.5	3.2	1.6	0.41	1.66	2.47	1.62	27.2
	254	158.75	158.75	99603D/99100	1	165	230	1.6	3.2	0.41	1.7	2.5	1.6	29.6
	254	158.75	158.75	99601TD/99100	2	171.1	223.5	3.2	1.6	0.41	1.66	2.47	1.62	31.1
	298.45	111.125	107.95	EE517060D/517117	1	176	272	3.2	3.2	0.33	2	3	2	34.2
	307.975	171.45	161.925	HH234049D/HH234010	1	187.3	270.5	6.7	9.5	0.33	2.07	3.09	2.03	58.2
317.5	171.45	161.925	HH234049D/HH234018	1	179	279	9.5	6.8	0.33	2.1	3.1	2	60.7	
152.781	244.475	92.075	87.313	81603D/81962	1	174.2	218.8	3.2	1.6	0.35	1.93	2.88	1.89	15.1
155.575	247.65	122.238	122.238	H432549D/H432510	1	167	226	1.6	3.2	0.37	1.8	2.7	1.8	22.4
158.75	225.425	76.2	79.375	46780DR/46720	2	179	206.5	0.8	3.2	0.38	1.76	2.62	1.72	10.3
	285.75	125.413	128.588	EE217063D/217112	1	182.2	245.7	3.2	6.4	0.4	1.68	2.5	1.64	35.3
	290.513	125.413	125.413	EE217063D/217114	1	182.2	246.2	3.2	6.4	0.4	1.68	2.5	1.64	36.8
	304.8	114.3	109.438	EE280625D/281200	1	207.2	271.3	3.2	6.4	0.36	1.87	2.79	1.83	37.5
165.1	225.425	76.2	79.375	46790D/46720	1	175	208	0.8	3.2	0.38	1.8	2.6	1.7	9.7
	269.875	146.05	146.05	H234649TD/H234610	2	186.4	243.7	1.6	3.2	0.33	2.03	3.02	1.98	32.2
174.625	288.925	123.825	123.825	HM237542D/HM237510	1	190	266	1.6	3.2	0.32	2.1	3.2	2.1	31.3
	288.925	158.75	158.75	94688TD/94113	2	201	255	1.6	3.2	0.47	1.44	2.15	1.41	40.2
	298.45	158.75	158.75	94688TD/94118	2	201	255	1.6	3.2	0.47	1.44	2.15	1.41	45.6
	342.9	190.5	187.325	EE590689TD/591350	2	208	285.7	3.2	6.4	0.49	1.37	2.04	1.34	77.6
177.8	247.65	90.488	90.488	67790D/67720	1	187	228	1.6	3.2	0.44	1.5	2.3	1.5	13.3
	273.05	112.713	112.71	82680D/82622	1	196.9	251.3	1.6	3.2	0.52	1.29	1.92	1.26	22.7
	279.4	112.712	112.71	82680D/82620	1	191	253	1.6	3.2	0.53	1.3	1.9	1.2	24.9
	285.75	106.363	106.36	EE91700D/91112	1	200.6	251.8	1.6	3.2	0.43	1.57	2.34	1.53	26

双外圈双列圆锥滚子轴承(英制系列) (Inch Double-Row Tapered Roller Bearings)



基本尺寸(mm) Boundary Dimensions				轴承型号 Bearing Numbers	结构 Design	相关安装尺寸(mm) Abutment and Fillet Dimensions				计算系数 Calculation Factors				质量(mm) Mass 参考 Refer.	
d	D	T	B			$d_{a\ min}$	$D_{b\ max}$	$r_{b\ max}$	$r_{a\ max}$	e	Y_1	Y_2	Y_0		
177.8	288.925	123.825	123.825	HM237546D/HM237510	1	191	266	1.6	3.2	0.32	2.1	3.2	2.1	30.5	
	288.925	123.825	123.825	94706D/94113	1	192	261	1.6	3.2	0.47	1.4	2.1	1.4	32.1	
	288.925	158.75	158.75	HM237546DD/HM237510	1	191	266	1.6	3.2	0.32	2.1	3.2	2.1	36.7	
	288.925	158.75	158.75	94704D/94113	1	201	255	1.6	3.2	0.47	1.44	2.15	1.41	39.1	
	298.45	123.825	123.825	94706D/94118	1	192	265	1.6	3.2	0.47	1.4	2.1	1.4	36.3	
	298.45	158.75	158.75	94704D/94118	1	201	255	1.6	3.2	0.47	1.44	2.15	1.41	44.5	
	304.8	114.3	109.438	EE280700D/281200	1	207.2	271.3	1.6	3.2	0.36	1.87	2.79	1.83	33.1	
	180.975	288.925	158.75	158.75	HM237549TD/HM237510	2	200.9	260.1	1.6	3.2	0.32	2.12	3.15	2.07	35.9
		288.925	158.75	158.75	94713TD/94113	2	201	255	1.6	3.2	0.47	1.44	2.15	1.41	38
		298.45	158.75	158.75	94713TD/94118	2	201	255	1.6	3.2	0.47	1.44	2.1	1.41	43.4
187.325	269.875	101.6	101.6	M238849D/M238810	1	206.4	245.5	1.6	3.2	0.33	2.03	3.02	1.98	19	
	319.964	161.925	168.276	H239649D/H239610	1	209	293	3.2	4.8	0.32	2.12	3.15	2.07	53.7	
	319.964	161.925	168.275	EE222074D/222126	1	211.9	280.4	3.2	4.8	0.4	1.68	2.5	1.64	53.8	
	320.675	161.925	168.275	H239649D/H239612	1	204	292	3.2	4.8	0.32	2.1	3.2	2.1	51.2	
	320.675	161.925	168.275	H239649D/H239612	1	211.3	286.3	3.2	4.8	0.32	2.12	3.15	2.07	51.9	
	320.675	161.925	168.275	EE222074D/222128	1	211.9	280.4	3.2	4.8	0.4	1.68	2.5	1.64	54.3	
190.5	317.5	133.35	133.35	93751D/93125	1	216	288	6.4	3.2	0.52	1.3	1.9	1.3	43	
	317.5	133.35	142.875	93751D/93126	1	222.9	276.8	6.4	3.2	0.52	1.29	1.92	1.26	45	
	365.049	152.4	158.75	EE420750D/421437	1	221	329	3.2	3.2	0.4	1.68	2.5	1.64	72.8	
	365.049	152.4	158.75	EE420750TD/421437	2	238.7	317	3.2	3.2	0.4	1.68	2.5	1.64	77.2	
	368.3	152.4	158.75	EE420750D/421450	1	238.7	317	3.2	3.2	0.4	1.68	2.5	1.64	79.4	
	368.3	152.4	158.75	EE420750TD/421450	2	238.7	317	3.2	3.2	0.4	1.68	2.5	1.64	79.4	
198.438	279.4	87.313	87.313	67980TD/67919	2	219.1	259.1	0.8	3.2	0.51	1.33	1.97	1.3	16.9	
	282.575	87.313	87.313	67980TD/67920	2	219.1	259.1	0.8	3.2	0.51	1.33	1.97	1.3	17.8	
199.975	317.5	133.35	133.35	93788D/93125	1	221	288	6.4	3.2	0.52	1.3	1.9	1.3	40	
	317.5	133.35	142.875	93788D/93126	1	222.9	276.8	6.4	3.2	0.52	1.29	1.92	1.26	42	
203.2	317.5	95.25	95.25	EE132081D/132125	1	235.4	285	3.2	3.2	0.31	2.15	3.21	2.11	28	
	317.5	123.825	123.825	93800D/93125	1	222	286	1.6	3.2	0.52	1.29	1.92	1.26	36.3	

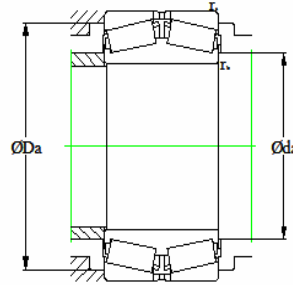
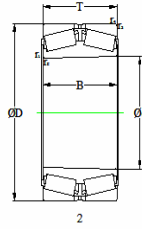
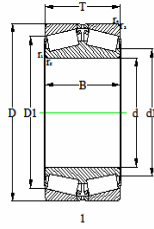
双外圈双列圆锥滚子轴承(英制系列) (Inch Double-Row Tapered Roller Bearings)



基本尺寸(mm) Boundary Dimensions				轴承型号 Bearing Numbers	结构 Design	相关安装尺寸(mm) Abutment and Fillet Dimensions				计算系数 Calculation Factors				质量(mm) Mass 参考 Refer.	
d	D	T	B			$d_{a\ min}$	$D_{b\ max}$	$r_{b\ max}$	$r_{a\ max}$	e	Y_1	Y_2	Y_0		
203.2	317.5	133.35	133.35	93801D/93125	1	222	288	6.4	3.2	0.52	1.3	1.9	1.3	39.1	
	317.5	133.35	142.875	93801D/93126	1	222.9	276.8	6.4	3.2	0.52	1.29	1.92	1.26	41	
	319.088	95.25	95.25	EE132081D/132127	1	235.4	285	3.2	3.2	0.31	2.15	3.21	2.11	28.6	
	365.049	152.4	158.75	EE420800D/421437	1	229	332	3.2	3.2	0.42	1.6	2.4	1.6	68.5	
	365.049	158.75	158.75	EE420801D/421437	1	237.5	317	3.2	3.2	0.4	1.68	2.5	1.64	73.1	
	368.3	152.4	158.75	EE420800D/421450	1	238.7	317	3.2	3.2	0.4	1.68	2.5	1.64	74.8	
	368.3	158.75	158.75	EE420801D/421450	1	237.5	317	3.2	3.2	0.4	1.68	2.5	1.64	75.4	
	206.375	279.4	87.313	87.313	67985D/67919	1	219.1	259.1	0.8	3.2	0.1	1.33	1.97	1.3	15.2
		282.575	87.313	87.313	67985D/67920	1	216	261	0.8	3.3	0.51	1.3	2	1.3	16.8
336.55		184.15	180.975	H242649D/242610	1	222	306	1.5	3.3	0.33	2	3	2	64.2	
336.55	184.15	180.975	H242649TD/H242610	2	232.1	300.1	1.6	3.2	0.33	2.03	3.02	1.98	65.1		
	209.55	317.5	184.15	184.15	93826TD/93125	2	222.9	278.4	1.6	3.2	0.52	1.29	1.92	1.26	48.3
317.5		184.15	193.675	93826TD/93126	2	222.9	276.8	1.6	3.2	0.52	1.29	1.92	1.26	50.2	
210.769	400.05	212.725	158.75	EE430829TD/431575	2	250	344.6	3.2	3.2	0.44	1.54	2.29	1.5	98.7	
214.975	285.75	92.075	85.725	LM742746TD/LM742710	2	226.2	265.2	1.6	3.2	0.48	1.4	2.09	1.37	15.3	
	288.925	92.075	85.725	LM742746TD/LM742714	2	226.2	265.2	1.6	3.2	0.48	1.4	2.09	1.37	16.3	
215.9	285.75	85.725	85.725	LM742749D/LM742710	1	229	266	0.8	3.2	0.48	1.4	2.09	1.37	14.8	
	288.925	85.75	85.725	LM742749D/LM742714	1	228	265.2	0.8	3.2	0.48	1.4	2.09	1.37	15.8	
	355.6	120.65	120.65	EE130850D/131400	1	260.5	319.2	1.6	1.6	0.33	2.04	3.04	2	50	
216.103	330.02	142.875	152.4	9977D/9920	1	232	301	3.2	3.2	0.55	1.2	1.8	1.2	43.2	
	330.2	127	130.175	9974D/9920	1	236.8	300.7	1.6	3.2	0.55	1.22	1.82	1.19	38.8	
219.075	358.775	200.025	196.85	H244849D/H244810	1	236	323	1.6	6.4	0.33	2	3	2	77.8	
	358.775	200.025	196.85	H244848TD/H244810	2	244.3	319.4	1.6	6.4	0.33	2.03	3.02	1.98	80.9	
219.936	314.325	123.822	115.888	M244246TD/M244210	2	238.9	288.1	1.6	3.2	0.33	2.03	3.02	1.98	29.6	
220.662	314.325	115.888	115.888	M244249D/M244210	1	233	292	1.6	3.2	0.33	2	3	2	29.6	

双外圈双列圆锥滚子轴承(英制系列) (Inch Double-Row Tapered Roller Bearings)

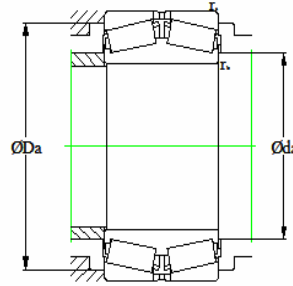
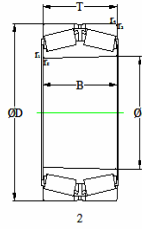
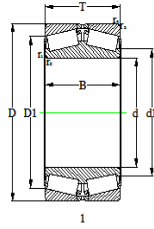
WRT



基本尺寸(mm) Boundary Dimensions				轴承型号 Bearing Numbers	结构 Design	相关安装尺寸(mm) Abutment and Fillet Dimensions				计算系数 Calculation Factors				质量(mm) Mass 参考 Refer.
d	D	T	B			$d_{a\ min}$	$D_{b\ max}$	$r_{b\ max}$	$r_{a\ max}$	e	Y_1	Y_2	Y_0	
225.425	355.6	120.65	120.65	EE130887D/131400	1	260.5	319.2	5.6	1.6	0.33	2.04	3.04	2	46.8
	355.6	165.1	165.1	EE130888D/131400	1	251	329	8	1.5	0.33	2	3	2	57.7
228.6	327.025	93.663	93.663	8573TD/8520	2	255.5	299.9	1.6	3.2	0.41	1.66	2.47	1.62	25.9
	328.625	93.663	93.663	8573TD/8522	2	255.5	299.9	1.6	3.2	0.41	1.66	2.47	1.62	26.5
	355.6	120.65	120.65	EE130900D/131400	1	260.5	319.2	1.6	1.6	0.33	2.04	3.04	2	45.8
	355.6	120.65	120.65	EE130901D/131400	1	260.5	319.2	5.6	1.6	0.33	2.04	3.04	2	45.8
234.95	355.6	165.1	165.1	EE130903D/131400	1	253	329	8	1.5	0.33	2	3	2	56.7
	400.05	139.7	139.7	EE529091D/529157	1	256	367	3.2	3.2	0.31	2.18	3.24	2.13	74.2
	400.05	161.925	158.75	EE430901D/431575	1	261.5	344.6	3.2	3.2	0.44	1.54	2.29	1.5	84.5
	425.45	165.1	177.8	EE700090D/700167	1	259	384	3	6.4	0.33	2	3	2	110
241.224	327.025	93.663	93.663	8576D/8520	1	248	304	1.6	3.2	0.41	1.7	2.5	1.6	24.4
	328.625	93.663	93.663	8576D/8522	1	255.5	299.9	1.6	3.2	0.41	1.66	2.47	1.62	24.8
	355.6	165.1	158.75	EE130926TD/131400	2	259.4	319.2	1.6	1.6	0.33	2.04	3.04	2	54.2
241.3	355.6	184.15	184.15	EE130927TD/131400	2	260.5	319.2	1.6	1.6	0.33	2.04	3.04	2	60.4
	384.175	209.55	209.55	H247549D/H247510	1	251	344	1.6	6.4	0.33	2	3	2	95.8
241.478	349.148	107.95	107.95	EE127094D/127135	1	267.2	319.1	1.6	3.2	0.35	1.91	2.84	1.86	34
	350.838	107.95	107.95	EE127094D/127137	1	267.2	319.1	1.6	3.2	0.35	1.91	2.84	1.86	34.8
	355.498	107.95	107.95	EE127094D/127138	1	267.2	319.1	1.6	3.2	0.35	1.91	2.84	1.86	36.9
	355.6	107.95	107.95	EE127094D/127140	1	257	328	1.6	3.2	0.35	1.9	2.8	1.9	36.9
241.770	355.6	92.862	92.71	EE170951D/171400	1	277.7	327.8	1.6	3.2	0.36	1.86	2.77	1.82	32.6
	365.049	92.862	92.71	EE170951D/171436	1	277.7	327.8	1.6	3.2	0.36	1.86	2.77	1.82	36.5
	368.3	92.862	92.71	EE170951D/171450	1	277.7	327.8	1.6	3.2	0.36	1.86	2.77	1.82	37.8
244.475	349.148	107.95	107.95	EE127097D/127135	1	257	325	1.6	3.2	0.35	1.9	2.8	1.9	33.8
	350.838	107.95	107.95	EE127097D/127137	1	267.2	319.1	1.6	3.2	0.35	1.91	2.84	1.86	34.7
	355.498	107.95	107.95	EE127097D/127138	1	267.2	319.1	1.6	3.2	0.35	1.91	2.84	1.86	36.9
	355.6	107.95	107.95	EE127097D/127140	1	267.2	319.1	1.6	3.2	0.35	1.91	2.84	1.86	36.9
244.775	327.025	92.075	92.075	LM247748D/LM247710	1	256	306	1.6	3.2	0.49	1.4	2.1	1.4	21.6
	381	146.05	146.05	EE126096D/126150	1	269	343	3.2	4.8	0.52	1.31	1.95	1.28	61.4

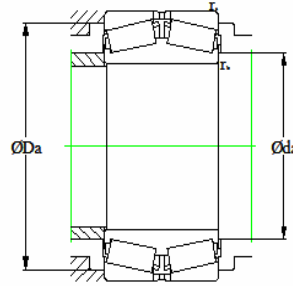
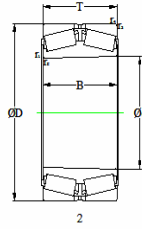
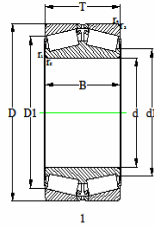
双外圈双列圆锥滚子轴承(英制系列) (Inch Double-Row Tapered Roller Bearings)

WRT



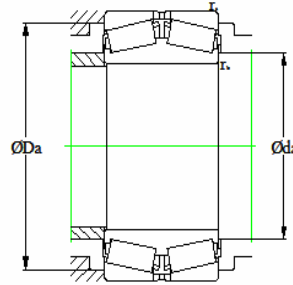
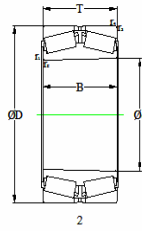
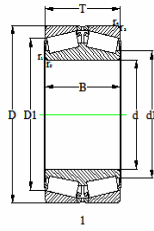
基本尺寸(mm) Boundary Dimensions				轴承型号 Bearing Numbers	结构 Design	相关安装尺寸(mm) Abutment and Fillet Dimensions				计算系数 Calculation Factors				质量(mm) Mass 参考 Refer.
d	D	T	B			$d_{a\ min}$	$D_{b\ max}$	$r_{b\ max}$	$r_{a\ max}$	e	Y_1	Y_2	Y_0	
247.65	400.05	114.3	119.06	EE220975D/221575	1	291.8	359.1	1.6	6.4	0.39	1.71	2.54	1.67	56.4
	400.05	192.088	196.848	EE220977TD/221575	2	291.8	359.1	3.2	6.4	0.39	1.71	2.54	1.67	86.1
	406.4	219.075	215.9	HH249949D/HH249910	1	268	366	3.2	6.4	0.33	2	3	2	115
250.825	422.275	139.7	152.4	HM252340D/HM252310	1	305.3	384.3	3.6	3.2	0.33	2.03	3.02	1.98	83
	431.724	139.7	145.258	HM252340D/HM252315	1	305.3	384.5	3.6	3.6	0.33	2.03	3.02	1.98	88.5
252.413	358.775	139.7	130.175	M249746TD/M249710	2	274.8	330.1	1.6	3.2	0.33	2.03	3.02	1.98	43.5
254	355.6	92.862	92.71	EE171000D/171400	1	266	331	1.6	3.2	0.36	1.9	2.8	1.8	27.1
	358.775	130.175	130.175	M249748D/M249710	1	269	335	3.2	3.2	0.33	2	3	2	42
	365.049	92.862	92.71	EE171000D/171436	1	277.7	327.8	1.6	3.2	0.36	1.86	2.77	1.82	32.9
	368.3	92.862	92.71	EE171000D/171450	1	269	340	1.6	3.2	0.36	1.85	2.76	1.81	32.5
	422.275	139.7	152.4	HM252343D/HM252310	1	305.3	384.3	3.6	3.2	0.33	2.03	3.02	1.98	81.6
	422.275	139.7	152.4	HM252344D/HM252310	1	305.3	384.3	3.6	3.2	0.33	2.03	3.02	1.98	81.6
	422.275	152.4	152.4	HM252342D/HM252310	1	303	384.3	6.7	3.2	0.33	2.03	3.02	1.98	83.7
	431.724	139.7	145.258	HM252343D/HM252315	1	305.3	384.5	3.6	3.6	0.33	2.03	3.02	1.98	87.1
	431.724	152.4	145.258	HM252342D/HM252315	1	303	384.5	6.7	3.6	0.33	2.03	3.02	1.98	89.2
	438.15	165.1	165.1	738101D/738172	1	283	400	3.2	6.4	0.36	1.9	2.8	1.8	107
	444.5	133.35	133.35	EE82101D/822175	1	283	400	3.2	6.4	0.36	1.9	2.8	1.8	107
260.35	365.125	107.95	107.95	EE134102D/134143	1	277	339	3.3	6.4	0.37	1.8	2.7	1.8	34.4
	368.3	107.95	107.95	EE134102D/134145	1	282.9	334.7	3.2	6.4	0.37	1.8	2.69	1.76	35.9
	400.05	114.3	119.06	EE221025D/221575	1	290	366	6.4	6.4	0.39	1.71	2.54	1.67	52
	422.275	139.7	152.4	HM252347D/HM252310	1	305.3	384.3	3.6	3.2	0.33	2.03	3.02	1.98	78.8
	422.275	152.4	155.575	HM252348D/HM252310	1	303.6	384.3	6.4	3.2	0.33	2.03	3.02	1.98	81.5
	422.275	152.4	155.575	HM252349D/HM252310	1	303.6	384.3	6.4	3.2	0.33	2.03	3.02	1.98	81.5
	422.275	180.975	152.4	HM252348DD/HM252310	1	298	384.3	9.5	3.2	0.33	2.03	3.02	1.98	84.5
	431.724	139.7	145.258	HM252347D/HM252315	1	305.3	384.5	3.6	3.6	0.33	2.03	3.02	1.98	84.3
	431.724	152.4	148.433	HM252349D/HM252315	1	303.6	384.5	6.4	3.6	0.33	2.03	3.02	1.98	87.1
	431.724	180.975	145.258	HM252348D/HM252315	1	298	384.5	9.5	3.6	0.33	2.03	3.02	1.98	90

双外圈双列圆锥滚子轴承(英制系列) (Inch Double-Row Tapered Roller Bearings)



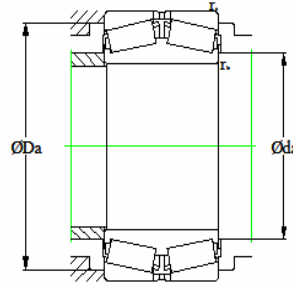
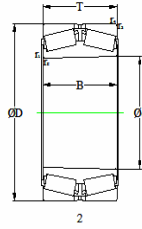
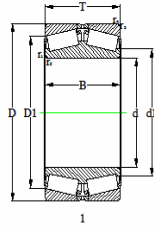
基本尺寸(mm) Boundary Dimensions				轴承型号 Bearing Numbers	结构 Design	相关安装尺寸(mm) Abutment and Fillet Dimensions				计算系数 Calculation Factors				质量(mm) Mass 参考 Refer.
d	D	T	B			$d_{a\ min}$	$D_{b\ max}$	$r_{b\ max}$	$r_{a\ max}$	e	Y_1	Y_2	Y_0	
260.35	444.5	196.85	196.85	823103D/823175	1	292.8	396.6	6.4	3.2	0.55	1.24	1.84	1.21	125
263.525	400.05	196.848	192.088	EE221039TD/221575	2	291.8	359.1	1.6	6	0.39	1.71	2.54	1.67	76.7
264.98	381	146.05	136.525	M252345TD/M252310	2	289.1	350.8	3.2	3.2	0.33	2.03	3.02	1.98	51.4
266.7	355.6	109.538	107.95	LM451349D/LM451310	2	281	335	1.6	3.2	0.36	1.87	2.79	1.83	29.9
	355.6	109.538	107.95	LM451349TD/LM451310	1	284.1	332	1.6	3.2	0.36	1.87	2.79	1.83	29.5
	357.2	109.538	107.95	LM451349D/LM451312	1	284.1	332	1.6	3.2	0.36	1.87	2.79	1.83	30.2
	357.2	109.538	107.95	LM451349TD/LM451312	2	284.1	332	1.6	3.2	0.36	1.87	2.79	1.83	30.2
	393.7	130.175	130.175	EE275106D/275155	1	309	364.4	3.2	6.4	0.4	1.68	2.5	1.64	55.3
	403.225	130.175	122.24	EE275106D/275158	1	309	365.4	3.2	6.4	0.4	1.68	2.5	1.64	59.4
	406.4	130.175	122.24	EE275106D/275160	1	309	365.4	3.2	6.4	0.4	1.68	2.5	1.64	61.3
269.875	381	136.525	136.525	M252349D/M252310	1	287	356	3.2	3.2	0.33	2	3	2	48.6
	381	136.525	136.525	M252349TD/M252310	2	290.9	350.8	1.6	3.2	0.33	2.03	3.02	1.98	48.5
276.225	393.7	130.175	130.175	EE275109D/275155	1	294	366	1.6	6.4	0.4	1.68	2.5	1.64	50.5
	403.225	130.175	122.24	EE275109D/275158	1	309	365.4	1.6	6.4	0.4	1.68	2.5	1.64	55.3
	406.4	130.175	122.24	EE275109D/275160	1	309	365.4	1.6	6.4	0.4	1.68	2.5	1.64	57.2
279.4	393.7	127	127	EE135111D/135155	1	297	368	1.6	6.4	0.4	1.68	2.5	1.64	48.1
	457.2	244.475	244.475	HH255149D/HH255110	1	309	412	1.6	6.4	0.33	2.03	3.02	1.98	158
	469.9	166.688	169.862	EE722111D/722185	1	313	431	6.4	3.3	0.38	1.8	2.7	1.7	119
	469.9	184.15	169.863	EE722112D/722185	1	324.9	412.5	9.5	3.2	0.38	1.79	2.67	1.75	123
	495.3	134.938	137.952	EE941106D/941950	1	349.3	440.5	1.6	3.2	0.4	1.68	2.5	1.64	114
279.578	380.898	117.475	117.475	LM654645D/LM654610	1	296	355	1.6	3.2	0.43	1.6	2.3	1.5	41
280	406.4	206.375	206.375	EE128113TD/128160	2	307.1	368.9	3.2	3.2	0.39	1.75	2.61	1.71	85.1
	406.4	206.375	206.375	EE128113D/128160	1	307.1	368.9	3.2	3.2	0.39	1.75	2.61	1.71	81.4
	406.4	206.375	206.375	EE128114D/128160	1	307.1	368.9	3.2	3.2	0.39	1.75	2.61	1.71	81.4
	409.981	206.375	206.375	EE128113TD/128161	2	307.1	368.9	3.2	3.2	0.39	1.75	2.61	1.71	81.4

双外圈双列圆锥滚子轴承(英制系列) (Inch Double-Row Tapered Roller Bearings)



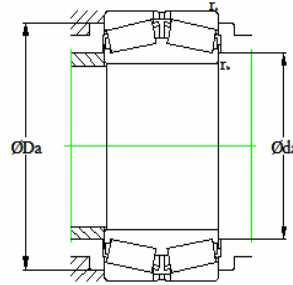
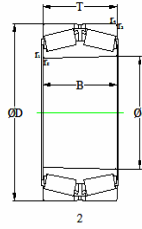
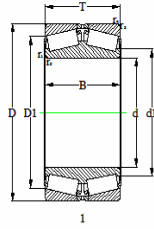
基本尺寸(mm) Boundary Dimensions				轴承型号 Bearing Numbers	结构 Design	相关安装尺寸(mm) Abutment and Fillet Dimensions				计算系数 Calculation Factors				质量(mm) Mass 参考 Refer.
d	D	T	B			$d_{a\ min}$	$D_{b\ max}$	$r_{b\ max}$	$r_{a\ max}$	e	Y_1	Y_2	Y_0	
280	409.981	206.375	206.375	EE128113D/128161	1	307.1	368.9	3.2	3.2	0.39	1.75	2.61	1.71	85.1
	409.981	206.375	206.375	EE128114D/128161	1	307.1	368.9	3.2	3.2	0.39	1.75	2.61	1.71	85.1
285.75	380.898	117.475	117.475	LM654648D/LM654610	1	300	355	1.6	3.2	0.43	1.6	2.3	1.5	38.5
	469.9	142.875	138.928	EE921126D/921850	1	333.5	429	1.6	3.2	0.29	2.31	3.44	2.26	97.5
	476.25	142.875	138.928	EE921126D/921875	1	333.5	429	1.6	3.2	0.29	2.31	3.44	2.26	103
288.925	406.4	144.463	144.463	M255449D/M255410	1	310	379	3.2	3.2	0.34	2	2.98	1.96	58.1
	406.4	144.463	144.463	M255449TD/M255410	2	315.6	373.9	3.2	3.2	0.34	2	2.97	1.95	61.4
292.1	422.275	130.175	130.175	EE330116D/330166	1	321	387.9	6.4	3.2	0.32	2.11	3.14	2.06	59.9
	558.8	285.75	285.75	EE790117D/790221	1	359.8	487.9	3.2	6.4	0.4	1.71	2.54	1.67	318
295.275	406.4	203.2	203.2	LM757043TD/LM757010	2	319.5	376.1	1.6	3.2	0.44	1.53	2.28	1.49	69.4
297.523	422.275	160.338	150.813	HM256846TD/HM256810	2	322.1	388.3	3.2	3.2	0.34	2	2.98	1.96	68.5
298.45	438.048	131.763	131.763	EE329118D/329172	1	336.6	399.7	3.2	3.2	0.33	2.04	3.04	2	68.9
	444.5	107.95	111.125	EE291176D/291749	1	344	403.5	7.9	3.2	0.38	1.79	2.66	1.75	61.1
	444.5	107.95	111.125	EE291176D/291750	1	344	403.5	7.9	1.6	0.38	1.79	2.66	1.75	61.2
299.974	438.048	134.938	133.35	EE129119D/129172	1	338.1	400.5	3.2	4.8	0.4	1.68	2.5	1.64	68.7
300.038	422.275	150.812	150.812	HM256849D/HM256810	1	318	395	3.2	3.2	0.34	2	3	2	66.7
	422.275	150.812	150.812	HM256849DA/HM256810	1	318	395	6.4	3.2	0.34	2	3	2	66.7
303.213	495.3	263.525	263.525	HH2568249D/HH2568210	1	341.5	441.7	3.2	6.4	0.33	2	3	2	212
	495.3	263.525	263.525	HH258249TD/HH258210	2	341.5	441.7	3.2	6.4	0.33	2.03	3.02	1.98	207
304.648	438.048	128.588	138.113	M757447D/M757410	1	332.3	403.8	3.2	4.8	0.47	1.44	2.15	1.41	64.8
	438.048	131.762	131.762	EE329117D/329172	1	324	408	3.2	3.2	0.33	2	3	2	66.3
	438.048	134.938	133.35	EE129121D/129172	1	325	407	3.2	4.8	0.42	1.6	2.4	1.6	65.6
304.8	438.048	134.938	138.113	M757447DE/M757410	1	330.6	403.8	3.2	4.8	0.47	1.44	2.15	1.41	65.5
	419.1	130.175	130.175	M257149D/M257110	1	322	392	1.6	6.4	0.33	2.03	3.02	1.98	53.1
	431.8	98.425	120.65	EE111201D/111700	1	331.5	392.3	3.2	3.2	0.44	1.54	2.29	1.5	51.8

双外圈双列圆锥滚子轴承(英制系列) (Inch Double-Row Tapered Roller Bearings)



基本尺寸(mm) Boundary Dimensions				轴承型号 Bearing Numbers	结构 Design	相关安装尺寸(mm) Abutment and Fillet Dimensions				计算系数 Calculation Factors				质量(mm) Mass 参考 Refer.
d	D	T	B			$d_{a\ min}$	$D_{b\ max}$	$r_{b\ max}$	$r_{a\ max}$	e	Y_1	Y_2	Y_0	
304.8	438.15	98.425	120.65	EE111201D/111725	1	331.5	392.3	3.2	3.2	0.44	1.54	2.29	1.5	55.9
	444.5	107.95	111.125	EE291200D/291749	1	337	416	7.9	3.2	0.38	1.78	2.65	1.74	55.7
	495.3	134.938	137.952	EE941206D/941950	1	329	455	1.5	3.2	0.4	1.7	2.5	1.7	103
	495.3	165.1	171.45	EE724121D/724195	1	354.5	438.7	3.2	6.4	0.4	1.68	2.5	1.64	130
	558.8	285.75	285.75	EE790119D/790221	1	341	506	3.2	6.4	0.39	1.7	2.5	1.7	307
304.902	412.648	128.588	128.588	M257248D/M257210	1	325	388	3.2	3.2	0.32	2.12	3.15	2.07	49
	438.048	212.725	196.85	EE129124D/129172	1	334.8	400.5	3.2	4.8	0.4	1.68	2.5	1.64	93.5
305	438.048	134.145	138.112	M757449D/M757410	1	328	407	4	4	0.47	1.43	2.12	1.4	65.3
305.003	438.048	134.938	133.35	EE129123D/129172	1	325	407	3.3	4.8	0.42	1.6	2.4	1.6	65.4
305.054	500	200	200	HM858548D/HM858511	1	333	457	3.2	6.4	0.33	2	3	2	164
317.5	422.275	128.588	128.588	LM258649D/LM258610	1	333	399	1.5	1.5	0.33	2.1	3.1	2	49.7
	447.675	158.75	158.75	HM259049D/HM259010	1	335	418	3.3	3.3	0.33	2	3	2	79.6
327.025	482.6	147.638	152.4	EE526129D/526190	1	362	438.9	1.6	3.2	0.39	1.73	2.57	1.69	94.3
330.2	482.6	147.638	152.4	EE526131D/526190	1	362	43.9	1.6	3.2	0.39	1.73	2.57	1.69	92.4
333.375	469.9	166.688	166.688	HM261049D/HM261010	1	352	440	3.3	3.3	0.33	2	3	2	91.4
	469.9	166.688	166.688	HM261049TD/HM261010	2	359.8	432.9	3.2	3.2	0.33	2.02	3	1.97	92.8
	523.875	185.738	185.738	HM265032TD/HM265010	2	402.5	483.6	3.2	6.4	0.33	2.03	3.02	1.98	138
342.9	533.4	146.05	139.7	EE971355D/972100	1	372	497	3.2	3.2	0.33	2	3	2	114
	571.5	163.512	163.512	EE536136D/536225	1	381	529	3.2	6.4	0.33	2	3	2	172
343.052	457.098	122.238	122.238	LM761649D/LM761610	1	361	432	1.5	3.2	0.48	1.4	2.1	1.4	54
344.091	488.95	184.15	174.625	HM262746TD/HM262710	2	375.3	450	3.2	3.2	0.33	2.02	3	1.97	108
346.075	469.9	95.25	104.775	EE161362D/161850	1	384.6	440.7	1.6	6.4	0.5	1.35	2.01	1.32	50.7
	482.6	95.25	104.775	EE161362D/161900	1	384.6	440.7	1.6	6.4	0.5	1.35	2.01	1.32	58.4
	488.95	95.25	104.775	EE161362D/161925	1	384.6	440.7	1.6	6.4	0.5	1.35	2	1.3	62

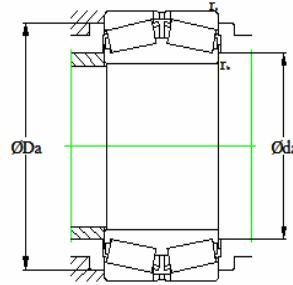
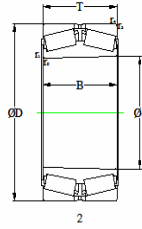
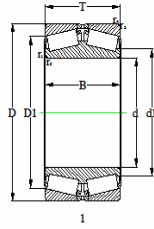
双外圈双列圆锥滚子轴承(英制系列) (Inch Double-Row Tapered Roller Bearings)



基本尺寸(mm) Boundary Dimensions				轴承型号 Bearing Numbers	结构 Design	相关安装尺寸(mm) Abutment and Fillet Dimensions				计算系数 Calculation Factors				质量(mm) Mass 参考 Refer.
d	D	T	B			$d_{a\ min}$	$D_{b\ max}$	$r_{b\ max}$	$r_{a\ max}$	e	Y_1	Y_2	Y_0	
346.075	488.95	174.625	174.625	HM262749D/HM262710	1	366	457	3.2	3.2	0.33	2	3	2	104
	488.95	174.625	174.625	HM262749TD/HM262710	2	377.1	450	3.2	3.2	0.33	2.02	3	1.97	105
347.663	469.9	138.112	138.112	M262449D/M262410	1	369	443	3.2	3.2	0.33	2.03	3.02	1.98	68
	469.9	228.6	228.601	M262448TD/M262410	2	373.7	436.7	3.2	3.2	0.33	2.03	3.02	1.98	93.7
355.6	444.5	114.3	112.713	L163149D/L163110	1	369	423	1.6	3.2	0.31	2.2	3.3	2.1	41
	457.2	120.65	120.65	LM263149D/LM263110	1	370	435	1.6	3.2	0.32	2.1	3.2	2.1	50.5
	482.6	128.588	133.35	LM763449D/LM763410	1	375	453	1.6	3.2	0.47	1.43	2.14	1.4	67.4
356.387	488.95	153.988	153.988	M263349D/M263310	1	374	459	1.6	3.2	0.33	2.03	3.02	1.98	85.4
	501.65	111.125	127	EE231401D/231975	1	382	472	1.6	3.2	0.44	1.53	2.28	1.5	75.3
	514.35	111.125	127	EE231401D/232025	1	404.5	465.8	3.2	3.2	0.44	1.53	2.28	1.5	85.3
356.387	469.9	101.6	104.75	EE161403D/161850	1	382.7	440.7	1.6	6.4	0.5	1.35	2.01	1.32	47.3
	482.6	101.6	104.75	EE161403D/161900	1	382.7	440.7	1.6	6.4	0.5	1.35	2.01	1.32	55
	488.95	101.6	104.75	EE161403D/161925	1	382.7	440.7	1.6	6.4	0.5	1.35	2.01	1.32	58.9
368.3	523.875	185.738	185.738	HM265049D/HM265010	1	390	487	3.3	6.4	0.33	2	3	2	135
	523.875	185.738	185.738	HM265049TD/HM265010	1	402.5	483.6	3.2	6.4	0.33	2.03	3.02	1.98	110
	596.9	158.75	165.1	EE181454D/182350	1	470.6	535	6.4	6.4	0.4	1.7	2.5	1.6	188
368.3	609.6	279.4	254	EE321146D/321240	1	415.2	545	3.2	6.4	0.36	1.9	2.83	1.86	303
	622.3	279.4	254	EE321146D/321245	1	415.2	545	3.2	6.4	0.36	1.9	2.83	1.86	327
374.574	546.1	193.675	193.675	HM266445D/HM266410	1	402	508	3.2	6.4	0.33	2	3	2	159
381.264	546.1	193.675	206.375	HM266446TD/HM266410	2	415.3	505	3.2	6.4	0.33	2.03	3.02	1.98	159
384.175	546.1	193.675	193.675	HM266449D/HM266410	1	407	508	3.3	6.4	0.33	2	3	2	150
	546.1	193.675	193.675	HM266449TD/HM266410	2	417.7	505	3.2	6.4	0.33	2.03	3.02	1.98	155
393.7	546.1	120.65	141.288	EE234157D/234215	1	419	507	3.2	6.4	0.48	1.4	2.1	1.4	92.2
	546.1	138.113	138.113	LM767745D/LM767710	1	418	510	1.6	6.4	0.48	1.42	2.11	1.38	97.4
	558.8	120.65	119.063	EE234157D/234220	1	436.4	505	3.2	6.4	0.48	1.42	2.11	1.39	97.2
400.05	609.6	142.875	157.163	EE911576D/912400	1	462	555	3.6	6.4	0.38	1.76	2.62	1.72	161

双外圈双列圆锥滚子轴承(英制系列) (Inch Double-Row Tapered Roller Bearings)

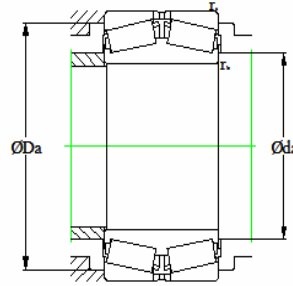
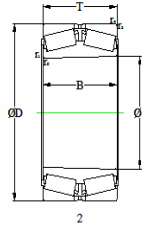
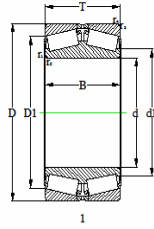
WRT



基本尺寸(mm) Boundary Dimensions				轴承型号 Bearing Numbers	结构 Design	相关安装尺寸(mm) Abutment and Fillet Dimensions				计算系数 Calculation Factors				质量(mm) Mass 参考 Refer.
d	D	T	B			$d_{a\ min}$	$D_{b\ max}$	$r_{b\ max}$	$r_{a\ max}$	e	Y_1	Y_2	Y_0	
406.4	546.1	120.65	141.288	EE234161D/234215	1	423	507	1.6	6.4	0.48	1.4	2.1	1.4	84.7
	546.1	138.113	138.113	LM767749D/LM767710	1	434.5	510	1.6	6.4	0.48	1.42	2.11	1.39	90.5
	558.8	120.65	119.063	EE234161D/234220	1	436.4	50	1.6	6.4	0.48	1.42	2.11	1.39	89.8
	574.675	114.3	130.967	EE285161D/285226	1	446.1	520	3.2	3.2	0.5	1.35	2.01	1.32	105
	590.55	209.55	209.55	M268743TD/M268710	2	455.6	545	3.2	6.4	0.33	2.03	3.02	1.98	199
	609.6	149.225	157.163	EE911603D/912400	1	460.7	555	3.6	6.4	0.38	1.76	2.62	1.72	158
	622.3	155.575	152.705	EE261602D/262450	1	467.7	570	3.6	6.7	0.38	1.76	2.62	1.72	169
	635	155.575	152.705	EE261602D/262500	1	467.7	570	3.6	6.7	0.38	1.76	2.62	1.72	184
406.476	673.049	195.262	195.262	EE623161D/623265	1	448	620	3.2	6.4	0.36	1.9	2.8	1.8	292
409.575	546.1	161.925	161.925	M667947D/M667911	1	431	510	1.6	6.4	0.43	1.6	2.3	1.6	110
413.677	590.55	225.425	209.55	M268746TD/M268710	2	452.6	545	3.2	6.4	0.33	2.03	3.02	1.98	195
415.925	590.55	209.55	209.55	M268749D/M268710	1	444	549	3.2	6.4	0.33	2.03	3.02	1.98	181
	590.55	209.55	209.55	M268749TD/M268710	2	455.6	545	3.2	6.4	0.33	2.03	3.02	1.98	189
419.1	622.3	155.575	152.705	EE261650D/262450	1	452	580	3.6	6.7	0.38	1.8	2.6	1.7	168
	635	155.575	152.705	EE261650D/262500	1	467.7	570	3.6	6.7	0.38	1.76	2.62	1.72	174
419.227	736.448	406.4	406.4	EE323166D/323290	1	463	662	6.4	6.4	0.37	1.8	2.7	1.8	775
425.45	685.698	253.873	254	EE328167D/328269	1	482.4	620	6.4	6.4	0.4	1.68	2.5	1.64	367
426.89	635	231.775	223.838	M270737TD/M270710	2	489	585	3.2	6.4	0.33	2.03	3.02	1.98	261
431.8	571.5	130.175	133.35	EE239171D/239225	1	450	542	1.6	3.2	0.38	1.8	2.6	1.7	92
	571.5	133.35	136.526	LM869449D/LM869410	1	453	537	1.6	3.2	0.55	1.24	1.84	1.21	92.1
	571.5	161.925	161.925	LM769349D/LM769310	1	453	534	6.4	3.2	0.44	1.52	2.26	1.49	112
	635	173.038	173.038	EE931170D/931250	1	468	595	6.4	6.4	0.32	2.1	3.1	2.1	193
431.902	685.698	253.873	254	EE328172D/328269	1	482.4	620	6.4	6.4	0.4	1.68	2.5	1.64	359

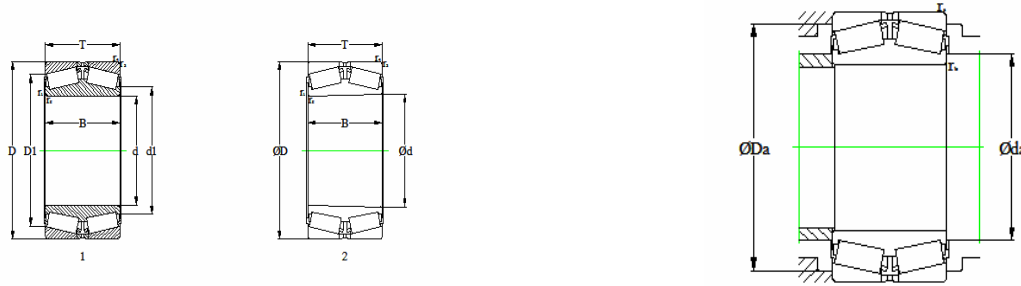
双外圈双列圆锥滚子轴承(英制系列) (Inch Double-Row Tapered Roller Bearings)

WRT



基本尺寸(mm) Boundary Dimensions				轴承型号 Bearing Numbers	结构 Design	相关安装尺寸(mm) Abutment and Fillet Dimensions				计算系数 Calculation Factors				质量(mm) Mass 参考 Refer.
d	D	T	B			$d_{a\ min}$	$D_{b\ max}$	$r_{b\ max}$	$r_{a\ max}$	e	Y_1	Y_2	Y_0	
432.003	609.524	152.4	152.4	EE736173D/736238	1	472.1	565	3.6	6.4	0.35	1.95	2.9	1.91	135
	609.524	152.4	161.925	EE736173D/736237	1	472.1	560	3.6	6.4	0.35	1.95	2.9	1.91	139
442.674	635	239.713	23.838	M270746TD/M270710	2	487.5	585	3.2	6.4	0.33	2.03	3.02	1.98	244
446.204	635	223.838	231.775	M270747TD/M270710	2	489	585	3.2	6.4	0.33	2.03	3.02	1.98	237
447.675	635	223.838	223.838	M270749D/M270710	1	475	591	3.2	6.4	0.33	2	3	2	232
	635	223.838	223.838	M270749TD/M270710	2	490.5	585	3.2	6.4	0.33	2.03	3.02	1.98	234
457.073	730.148	196.85	203.2	EE671798D/672873	1	515	660	1.6	6.4	0.39	1.72	2.57	1.69	315
	749.3	412.75	419.1	EE925179D/925295	1	497	686	3.2	6.4	0.31	2.2	3.3	2.2	760
457.2	596.9	130.175	133.35	EE244181D/244235	1	475	565	1.6	3.2	0.4	1.7	2.5	1.6	96.9
	596.9	133.35	136.525	L770849D/L770810	1	476	566	1.6	3.2	0.47	1.4	2.1	1.4	98.9
	660.4	155.575	155.572	EE737179D/737260	1	500	600	3.2	6.4	0.37	1.8	2.69	1.76	175
457.403	730.148	196.85	203.2	EE671802D/672873	1	515	660	1.6	6.4	0.39	1.72	2.57	1.69	315
477.441	679.45	257.175	238.125	M272746TD/M272710	2	520	630	3.2	6.4	0.33	2.03	3.02	1.98	285
479.425	679.45	238.125	238.125	M272749TD/M272710	2	520	630	3.2	6.4	0.33	2.03	3.02	1.98	277
	679.45	238.125	238.125	M272749D/M272710	1	506	635	3.3	6.4	0.34	2	3	1.9	290
482.6	647.7	201.612	201.612	M272647D/M272610	1	510	609	3.2	6.4	0.33	2.03	3.02	1.98	185
489.026	634.873	152.4	152.4	EE243193D/243250	1	525	595	3.2	3.2	0.35	1.9	2.9	1.8	130
	634.873	153.988	153.988	LM772749D/LM772710	1	508	602	3.2	3.2	0.47	1.4	2.1	1.4	125
501.65	711.2	250.825	250.825	M274149D/M274110	1	534	663	3.2	6.4	0.33	2.03	3.02	1.98	314
	711.2	250.825	250.825	M274149TD/M274110	2	545	655	3.2	6.4	0.33	2.03	3.02	1.98	323
505.181	838.2	266.7	266.7	EE426198D/426330	1	580	755	6.4	9.5	0.48	1.41	2.1	1.38	590
508	762	219.075	219.075	EE531201D/531300	1	551	710	6.4	6.4	0.38	1.8	2.6	1.7	370
	838.2	266.7	266.7	EE426201D/426330	1	580	755	6.4	9.5	0.48	1.41	2.1	1.38	585

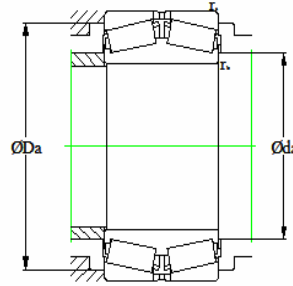
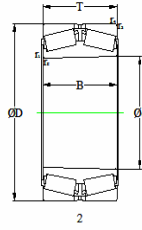
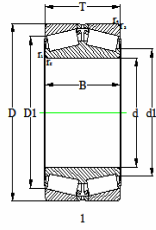
双外圈双列圆锥滚子轴承(英制系列) (Inch Double-Row Tapered Roller Bearings)



基本尺寸(mm) Boundary Dimensions				轴承型号 Bearing Numbers	结构 Design	相关安装尺寸(mm) Abutment and Fillet Dimensions				计算系数 Calculation Factors				质量(mm) Mass 参考 Refer.
d	D	T	B			$d_{a\ min}$	$D_{b\ max}$	$r_{b\ max}$	$r_{a\ max}$	e	Y_1	Y_2	Y_0	
509.588	838.2	266.7	266.7	EE426203D/426330	1	580	755	6.4	9.5	0.48	1.41	2.1	1.38	582
514.35	673.1	203.2	203.2	LM274449D/LM274410	1	540	636	3.2	6.4	0.33	2.03	3.02	1.98	189
517.657	736.6	277.813	258.763	M275346TD/M275310	2	560	680	3.2	6.4	0.33	2.03	3.02	1.98	369
519.113	736.6	258.763	258.763	M275349D/M275310	1	550	687	3.2	6.4	0.33	2	3	2	363
	736.6	258.763	258.763	M275349TD/M275310	2	560	680	3.2	6.4	0.33	2.03	3.02	1.98	361
534.723	761.873	288.925	269.875	M276446TD/M276410	2	570	700	3.2	6.4	0.33	2.03	3.02	1.98	409
536.575	761.873	269.875	269.875	M276449D/M276410	1	567	710	3.2	6.4	0.33	2	3	2	409
539.75	784.225	161.925	165.1	EE522126D/523087	1	595	715	3.2	6.4	0.48	1.42	2.11	1.39	261
558.8	736.6	155.575	155.575	EE843220D/843290	1	585	699	3.2	6.4	0.34	1.98	2.94	1.93	177
	736.6	196.85	196.85	LM377449D/LM377410	1	583	696	3.2	6.4	0.35	1.9	2.9	1.9	237
571.5	812.8	285.75	285.75	M278749D/M278710	1	603	759	3.2	6.4	0.33	2	3	2	502
584.2	762	188.912	193.675	LM778549D/LM778510G2	1	615	717	3.2	6.4	0.47	1.43	2.14	1.4	223
595.313	844.55	296.863	296.863	M280049D/M280010	1	630	790	3.2	6.4	0.33	2	3	2	558
609.6	787.4	171.45	171.45	EE649241D/649310	1	634	749	3.2	6.4	0.37	1.8	2.7	1.8	216
	812.8	190.5	190	EE743241D/743320	1	660	755	3.2	6.4	0.33	2.06	3.06	2.01	271
	863.6	317.5	317.5	M280349D/M280310G2	1	648	807	3.2	6.4	0.33	2.03	3.02	1.98	585
635	901.7	317.5	317.5	M281049D/M281010	1	675	843	3.2	6.4	0.33	2.03	3.02	1.98	641
657.225	933.45	328.612	328.612	M281649D/M281610G2	1	699	870	3.2	6.4	0.33	2.03	3.02	1.98	711
660.4	812.8	176.212	176.212	L281149D/L281110G2	1	684	789	3.2	6.4	0.33	2	3	2	195
679.45	901.7	265.112	265.112	LM281849D/LM281810G2	1	714	852	3.2	6.4	0.33	2.03	3.02	1.98	459
685.8	876.3	168.275	171.45	EE655271D/655345G2	1	717	831	3.2	6.4	0.42	1.61	2.4	1.58	247

双外圈双列圆锥滚子轴承(英制系列) (Inch Double-Row Tapered Roller Bearings)

WRT



基本尺寸(mm) Boundary Dimensions				轴承型号 Bearing Numbers	结构 Design	相关安装尺寸(mm) Abutment and Fillet Dimensions				计算系数 Calculation Factors				质量(mm) Mass 参考 Refer.
d	D	T	B			$d_{a\ min}$	$D_{b\ max}$	$r_{b\ max}$	$r_{a\ max}$	e	Y_1	Y_2	Y_0	
708.25	930.275	273.05	273.05	LM282549D/LM282510	1	741	879	3.2	6.4	0.33	2.03	3.02	1.98	490
711.2	914.4	149.225	149.225	EE755281D/755360	1	744	873	3.2	6.4	0.38	1.77	2.64	1.73	243
714.375	1016	339.725	339.725	M383240D/M383210	1	756	953	3.2	6.4	0.35	1.9	2.9	1.9	924
730.25	1035.05	365.125	365.125	M283449D/M283410	1	790	960	3.2	6.4	0.33	2.03	3.02	1.98	1000
749.3	990.6	293	293	LM283649D/LM283610	1	786	936	3.2	6.4	0.33	2.03	3.02	1.98	606
762	1066.8	352.425	365.125	M284148D/M284111	1	819	996	3.2	6.4	0.33	2.03	3.02	1.98	968
762	1079.5	381	381	M284249D/M284210	1	810	1005	4.8	12.7	0.33	2.03	3.02	1.98	1097
825.5	1168.4	409.575	409.575	M285848D/M285810	1	890	1090	4.8	12.7	0.33	2.03	3.02	1.98	1440
863.6	1130.3	323.85	323.85	LM286249D/LM286210	1	901	1067	4.8	12.7	0.33	2	3	2	915
863.6	1219.2	425.45	438.15	EE547341D/547480	1	918	1135	4.8	12.7	0.33	2.03	3.02	1.98	1552
901.7	1295.4	438.15	450.85	634356D/634510	1	936	1190	4.8	12.7	0.35	1.9	2.9	1.8	2000
938.212	1270	400.05	400.05	LM3287649D/LM287610	1	990	1190	4.8	12.7	0.33	2.03	3.02	1.98	1444
939.8	1333.5	463.55	463.55	LM287849D/LM287810	1	996	1246	4.8	12.7	0.33	2	3	2	2170